

Tctex5 Rabbit pAb

CatalogNo: YT4589

Key Features

Host Species

- Rabbit

Reactivity

- Human, Mouse, Rat

Applications

- IHC, IF, ELISA

MW

- 14kD (Calculated)

Isotype

- IgG

Recommended Dilution Ratios

IHC 1:100-1:300

ELISA 1:40000

IF 1:50-200

Storage

Storage*

-15°C to -25°C/1 year(Do not lower than -25°C)

Formulation

Liquid in PBS containing 50% glycerol, 0.5% BSA and 0.02% sodium azide.

Basic Information

Clonality

Polyclonal

Immunogen Information

Immunogen

The antiserum was produced against synthesized peptide derived from human PPP1R11. AA range:71-120

Specificity

Tctex5 Polyclonal Antibody detects endogenous levels of Tctex5 protein.

Target Information

Gene name PPP1R11

Protein Name Protein phosphatase 1 regulatory subunit 11

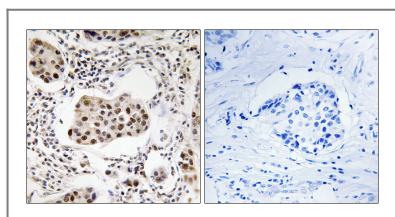
| Organism | Gene ID | UniProt ID |
|----------|--------------------------|--------------------------|
| Human | 6992 ; | O60927 ; |
| Mouse | 76497 ; | Q8K1L5 ; |
| Rat | 294207 ; | Q6MFY6 ; |

Cellular Localization protein phosphatase type 1 complex,nucleus,cytoplasm,

Tissue specificity Widely expressed.

Function Function:Inhibitor of protein phosphatase 1.,tissue specificity:Widely expressed.,

Validation Data



Immunohistochemistry analysis of paraffin-embedded human breast carcinoma tissue, using PPP1R11 Antibody. The picture on the right is blocked with the synthesized peptide.

Contact information

Orders: order@immunoway.com
Support: tech@immunoway.com
Telephone: 877-594-3616 (Toll Free), 408-747-0185
Website: <http://www.immunoway.com>
Address: 2200 Ringwood Ave San Jose, CA 95131 USA



Please scan the QR code to access additional product information:
Tctex5 Rabbit pAb

For Research Use Only. Not for Use in Diagnostic Procedures.

[Antibody](#) | [ELISA Kits](#) | [Protein](#) | [Reagents](#)