

TBX10 Rabbit pAb

CatalogNo: YT4565

Key Features

Host Species

- Rabbit

Reactivity

- Human, Mouse

Applications

- WB, IHC, IF, ELISA

MW

- 43kD (Observed)

Isotype

- IgG

Recommended Dilution Ratios

WB 1:500-1:2000

IHC 1:100-1:300

ELISA 1:5000

IF 1:50-200

Storage

Storage*

-15°C to -25°C/1 year (Do not lower than -25°C)

Formulation

Liquid in PBS containing 50% glycerol, 0.5% BSA and 0.02% sodium azide.

Basic Information

Clonality

Polyclonal

Immunogen Information

Immunogen

The antiserum was produced against synthesized peptide derived from human TBX10. AA range: 261-310

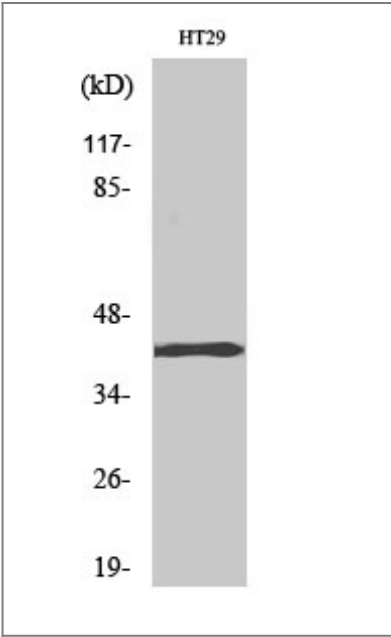
Specificity

TBX10 Polyclonal Antibody detects endogenous levels of TBX10 protein.

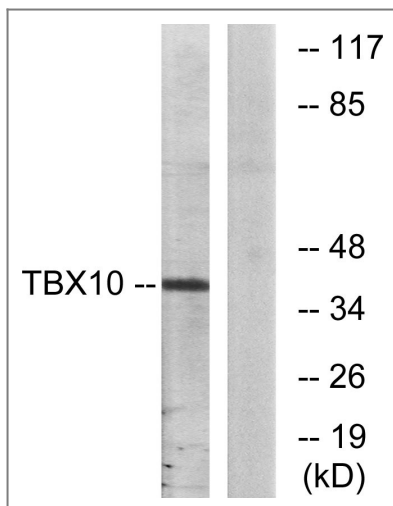
Target Information

Gene name	TBX10		
Protein Name	T-box transcription factor TBX10		
	Organism	Gene ID	UniProt ID
	Human	347853 ;	O75333 ;
	Mouse		Q810F8 ;
Cellular Localization	Nucleus .		
Tissue specificity	Lymph node,		
Function	Function:Probable transcriptional regulator involved in developmental processes.,similarity:Contains 1 T-box DNA-binding domain.,		

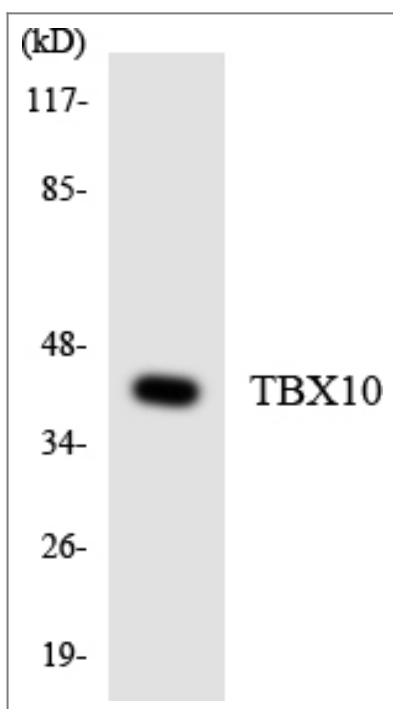
| Validation Data



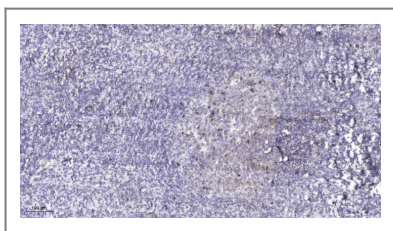
Western Blot analysis of various cells using TBX10 Polyclonal Antibody cells nucleus extracted by Minute TM Cytoplasmic and Nuclear Fractionation kit (SC-003,Inventbiotech,MN,USA).



Western blot analysis of lysates from HT-29 cells, using TBX10 Antibody. The lane on the right is blocked with the synthesized peptide.



Western blot analysis of the lysates from HUVEC cells using TBX10 antibody.



Immunohistochemical analysis of paraffin-embedded human tonsil. 1, Antibody was diluted at 1:200 (4° overnight). 2, Tris-EDTA, pH 9.0 was used for antigen retrieval. 3, Secondary antibody was diluted at 1:200 (room temperature, 45 min).

Contact information

Orders: order@immunoway.com
 Support: tech@immunoway.com
 Telephone: 877-594-3616 (Toll Free), 408-747-0185
 Website: <http://www.immunoway.com>
 Address: 2200 Ringwood Ave San Jose, CA 95131 USA



Please scan the QR code
 to access additional
 product information:
TBX10 Rabbit pAb

