

## TAT Rabbit pAb

CatalogNo: YT4543

### | Key Features

#### Host Species

- Rabbit

#### Reactivity

- Human, Mouse, Rat

#### Applications

- IHC, IF, ELISA

#### MW

- 50kD (Calculated)

#### Isotype

- IgG

### | Recommended Dilution Ratios

IHC 1:100-1:300

ELISA 1:40000

IF 1:50-200

### | Storage

#### Storage\*

-15°C to -25°C/1 year(Do not lower than -25°C)

#### Formulation

Liquid in PBS containing 50% glycerol, 0.5% BSA and 0.02% sodium azide.

### | Basic Information

#### Clonality

Polyclonal

### | Immunogen Information

#### Immunogen

The antiserum was produced against synthesized peptide derived from human TAT. AA range:255-304

#### Specificity

TAT Polyclonal Antibody detects endogenous levels of TAT protein.

### | Target Information

**Gene name** TAT

**Protein Name** Tyrosine aminotransferase

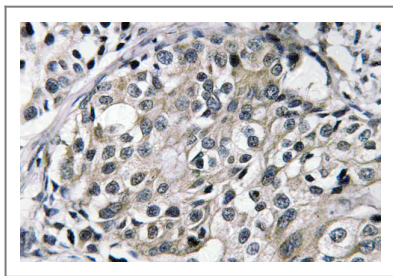
| Organism | Gene ID                  | UniProt ID               |
|----------|--------------------------|--------------------------|
| Human    | <a href="#">6898</a> ;   | <a href="#">P17735</a> ; |
| Mouse    | <a href="#">234724</a> ; | <a href="#">Q8QZR1</a> ; |
| Rat      | <a href="#">24813</a> ;  | <a href="#">P04694</a> ; |

**Cellular Localization** mitochondrion,cytosol,

**Tissue specificity** Liver,

**Function** Catalytic activity:L-tyrosine + 2-oxoglutarate = 4-hydroxyphenylpyruvate + L-glutamate.,cofactor:Pyridoxal phosphate.,Disease:Defects in TAT are the cause of tyrosinemia type 2 (TYRO2) [MIM:276600]; also known as Richner-Hanhart syndrome. TYRO2 is an inborn error of metabolism characterized by elevations of tyrosine in the blood and urine, and oculocutaneous manifestations. Typical features include palmoplantar keratosis, painful corneal ulcers, and mental retardation.,pathway:Amino-acid degradation; L-phenylalanine degradation; acetoacetic acid and fumarate from L-phenylalanine: step 2/6.,similarity:Belongs to the class-I pyridoxal-phosphate-dependent aminotransferase family.,subunit:Homodimer.,

## Validation Data



Immunohistochemistry analysis of TAT antibody in paraffin-embedded human breast carcinoma tissue.

## Contact information

Orders: [order@immunoway.com](mailto:order@immunoway.com)  
Support: [tech@immunoway.com](mailto:tech@immunoway.com)  
Telephone: 877-594-3616 (Toll Free), 408-747-0185  
Website: <http://www.immunoway.com>  
Address: 2200 Ringwood Ave San Jose, CA 95131 USA



Please scan the QR code to access additional product information:  
**TAT Rabbit pAb**

