

TASK-5 Rabbit pAb

CatalogNo: YT4542

Key Features

Host Species

- Rabbit

Reactivity

- Human,Rat

Applications

- WB,IHC,IF,ELISA

MW

- 42kD (Observed)

Isotype

- IgG

Storage

Storage* -15°C to -25°C/1 year(Do not lower than -25°C)

Formulation Liquid in PBS containing 50% glycerol, 0.5% BSA and 0.02% sodium azide.

Recommended Dilution Ratios

WB 1:500-1:2000

IHC 1:100-1:300

ELISA 1:20000

IF 1:50-200

Basic Information

Clonality Polyclonal

Immunogen Information

Immunogen The antiserum was produced against synthesized peptide derived from human KCNK15. AA range:273-322

Specificity TASK-5 Polyclonal Antibody detects endogenous levels of TASK-5 protein.

Target Information

Gene name KCNK15

Protein Name Potassium channel subfamily K member 15

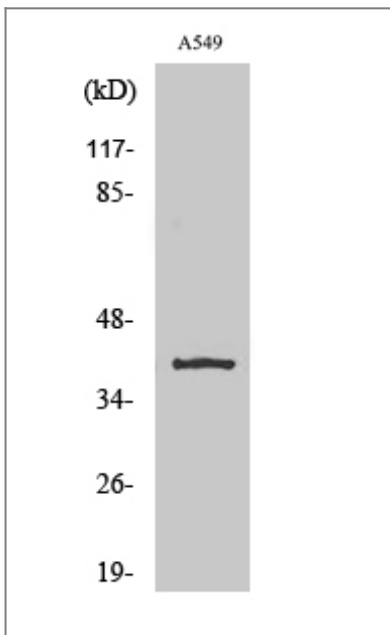
Organism	Gene ID	UniProt ID
Human	60598 ;	Q9H427 ;

Cellular Localization Membrane; Multi-pass membrane protein.

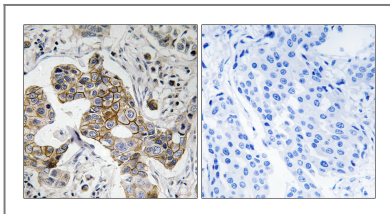
Tissue specificity Detected in pancreas, heart, placenta, lung, liver, kidney, ovary, testis, skeletal muscle and adrenal gland, and at lower levels in prostate, spleen and thyroid gland.

Function Function:Probable potassium channel subunit. No channel activity observed in heterologous systems. May need to associate with another protein to form a functional channel.,polymorphism:Three variant polypeptides are known: TASK-5A, TASK-5B and TASK-5C. The sequence shown is that of TASK-5C.,similarity:Belongs to the two pore domain potassium channel (TC 1.A.1.8) family.,subunit:Heterodimer .,tissue specificity:Detected in pancreas, heart, placenta, lung, liver, kidney, ovary, testis, skeletal muscle and adrenal gland, and at lower levels in prostate, spleen and thyroid gland.,

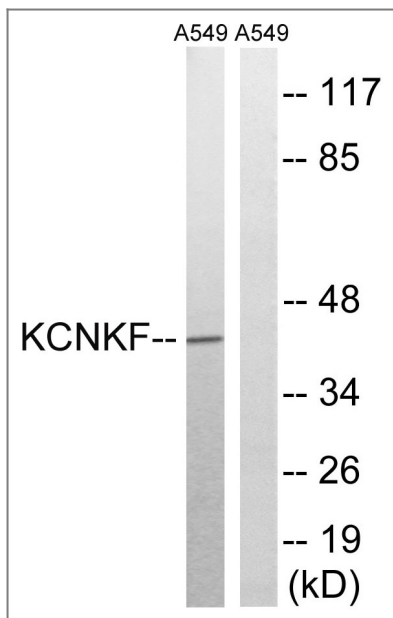
Validation Data



Western Blot analysis of various cells using TASK-5 Polyclonal Antibody diluted at 1:1000



Immunohistochemistry analysis of paraffin-embedded human breast carcinoma tissue, using KCNK15 Antibody. The picture on the right is blocked with the synthesized peptide.



Western blot analysis of lysates from A549 cells, using KCNK15 Antibody. The lane on the right is blocked with the synthesized peptide.

Contact information

Orders: order@immunoway.com
Support: tech@immunoway.com
Telephone: 877-594-3616 (Toll Free), 408-747-0185
Website: <http://www.immunoway.com>
Address: 2200 Ringwood Ave San Jose, CA 95131 USA



Please scan the QR code to access additional product information:
TASK-5 Rabbit pAb

For Research Use Only. Not for Use in Diagnostic Procedures.

[Antibody](#) | [ELISA Kits](#) | [Protein](#) | [Reagents](#)