

TALK-2 Rabbit pAb

CatalogNo: YT4539

Key Features

Host Species

- Rabbit

Reactivity

- Human

Applications

- WB,IF,ELISA

MW

- 37-42kD (Observed)

Isotype

- IgG

Recommended Dilution Ratios

WB 1:500-1:2000

IF 1:200-1:1000

ELISA 1:20000

Not yet tested in other applications.

Storage

Storage*

-15°C to -25°C/1 year(Do not lower than -25°C)

Formulation

Liquid in PBS containing 50% glycerol, 0.5% BSA and 0.02% sodium azide.

Basic Information

Clonality

Polyclonal

Immunogen Information

Immunogen

The antiserum was produced against synthesized peptide derived from human KCNK17. AA range:271-320

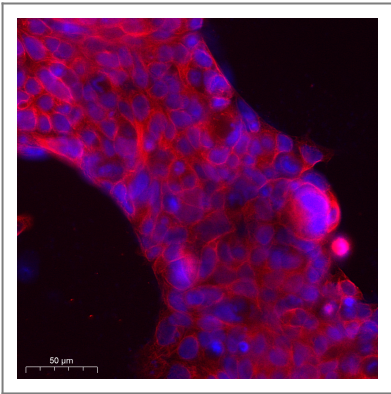
Specificity

TALK-2 Polyclonal Antibody detects endogenous levels of TALK-2 protein.

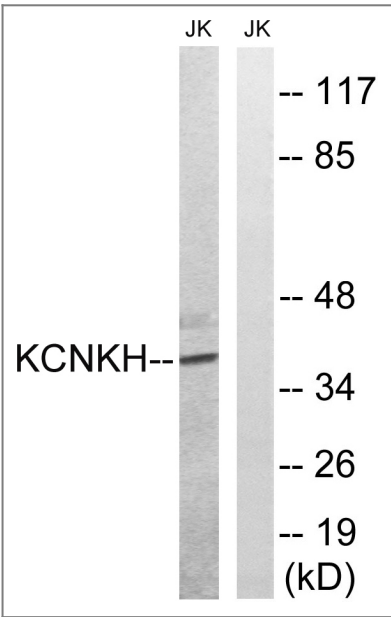
Target Information

Gene name	KCNK17		
Protein Name	Potassium channel subfamily K member 17		
	Organism	Gene ID	UniProt ID
	Human	89822 ;	Q96T54 ;
Cellular Localization	Membrane; Multi-pass membrane protein.		
Tissue specificity	Adrenal gland,Lung,Pancreas,Spleen,		
Function	Function:Outward rectifying potassium channel. Produces rapidly activating and non-inactivating outward rectifier K(+) currents.,miscellaneous:Inhibited by Ba(2+), quinidine, chloroform and halothane. Activated at alkaline pH. Activated by quinine and isoflurane.,similarity:Belongs to the two pore domain potassium channel (TC 1.A.1.8) family.,subunit:Homodimer .,		

Validation Data



Immunofluorescence analysis of Caco2 cell. 1,primary Antibody was diluted at 1:100(4°C overnight). 2, Goat Anti Rabbit IgG (H&L) - AFluor 594 Secondary antibody(catalog No: RS3611) was diluted at 1:500(room temperature, 50min).



Western blot analysis of lysates from Jurkat cells, using KCNK17 Antibody. The lane on the right is blocked with the synthesized peptide.

| Contact information

Orders: order@immunoway.com
Support: tech@immunoway.com
Telephone: 877-594-3616 (Toll Free), 408-747-0185
Website: <http://www.immunoway.com>
Address: 2200 Ringwood Ave San Jose, CA 95131 USA



Please scan the QR code
to access additional
product information:
TALK-2 Rabbit pAb

For Research Use Only. Not for Use in Diagnostic Procedures.

[Antibody](#) | [ELISA Kits](#) | [Protein](#) | [Reagents](#)