

## TAF II p68 Rabbit pAb

CatalogNo: YT4530

### Key Features

#### Host Species

- Rabbit

#### Reactivity

- Human, Mouse

#### Applications

- WB, IHC, IF, ELISA

#### MW

- 62kD (Observed)

#### Isotype

- IgG

### Recommended Dilution Ratios

**WB 1:500-1:2000**

**IHC 1:100-1:300**

**ELISA 1:5000**

**IF 1:50-200**

### Storage

#### Storage\*

-15°C to -25°C/1 year (Do not lower than -25°C)

#### Formulation

Liquid in PBS containing 50% glycerol, 0.5% BSA and 0.02% sodium azide.

### Basic Information

#### Clonality

Polyclonal

### Immunogen Information

#### Immunogen

The antiserum was produced against synthesized peptide derived from human TAF15. AA range: 351-400

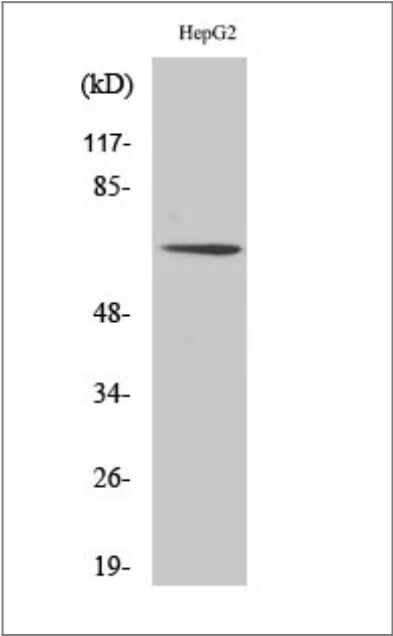
#### Specificity

TAF II p68 Polyclonal Antibody detects endogenous levels of TAF II p68 protein.

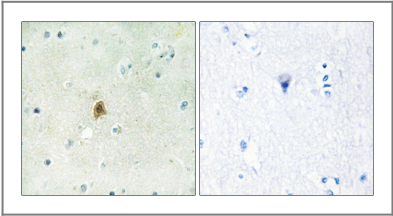
### Target Information

Gene name	TAF15		
Protein Name	TATA-binding protein-associated factor 2N		
	Organism	Gene ID	UniProt ID
	Human	<a href="#">8148;</a>	<a href="#">Q92804;</a>
Cellular Localization	Nucleus . Cytoplasm . Shuttles from the nucleus to the cytoplasm.		
Tissue specificity	Ubiquitous. Observed in all fetal and adult tissues.		
Function	Disease:A chromosomal aberration involving TAF15/TAF2N is found in a form of extraskeletal myxoid chondrosarcomas (EMC). Translocation t(9;17)(q22;q11) with NR4A3.,Function:RNA and ssDNA-binding protein that may play specific roles during transcription initiation at distinct promoters. Can enter the preinitiation complex together with the RNA polymerase II (Pol II).,PTM:Arg-206 is dimethylated, probably to asymmetric dimethylarginine.,PTM:Phosphorylated upon DNA damage, probably by ATM or ATR.,similarity:Belongs to the RRM TET family.,similarity:Contains 1 RanBP2-type zinc finger.,similarity:Contains 1 RRM (RNA recognition motif) domain.,subunit:Belongs to the RNA polymerase II (Pol II) transcriptional multiprotein complex, together with the TATA-binding protein (TBP) and other TBP-associated factors (TAF(II)s). Binds SF1.,tissue specificity:Ubiquitous. Observed in all fetal and adult tissues.,		

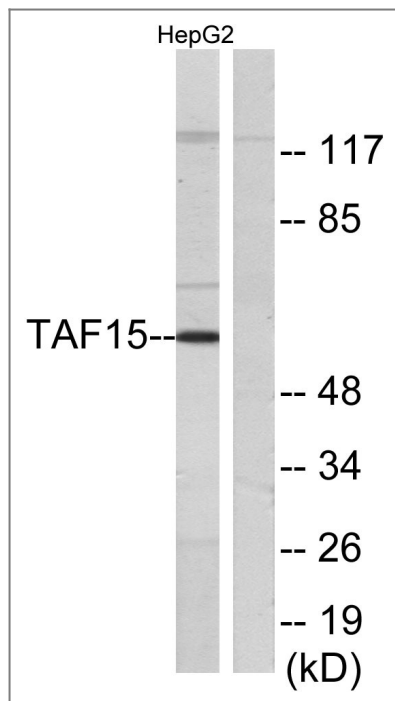
Validation Data



Western Blot analysis of various cells using TAF II p68 Polyclonal Antibody



Immunohistochemistry analysis of paraffin-embedded human brain tissue, using TAF15 Antibody. The picture on the right is blocked with the synthesized peptide.



Western blot analysis of lysates from HepG2 cells, using TAF15 Antibody. The lane on the right is blocked with the synthesized peptide.

## Contact information

Orders: [order@immunoway.com](mailto:order@immunoway.com)  
 Support: [tech@immunoway.com](mailto:tech@immunoway.com)  
 Telephone: 877-594-3616 (Toll Free), 408-747-0185  
 Website: <http://www.immunoway.com>  
 Address: 2200 Ringwood Ave San Jose, CA 95131 USA



Please scan the QR code  
 to access additional  
 product information:  
**TAF II p68 Rabbit  
 pAb**

For Research Use Only. Not for Use in Diagnostic Procedures.

[Antibody](#) | [ELISA Kits](#) | [Protein](#) | [Reagents](#)