

TAF II p18 Rabbit pAb

CatalogNo: YT4528

Key Features

Host Species

- Rabbit

Reactivity

- Human, Mouse

Applications

- IHC, IF, ELISA

MW

- 14kD (Calculated)

Isotype

- IgG

Recommended Dilution Ratios

IHC 1:100-1:300

ELISA 1:40000

IF 1:50-200

Storage

Storage* -15°C to -25°C/1 year (Do not lower than -25°C)

Formulation Liquid in PBS containing 50% glycerol, 0.5% BSA and 0.02% sodium azide.

Basic Information

Clonality Polyclonal

Immunogen Information

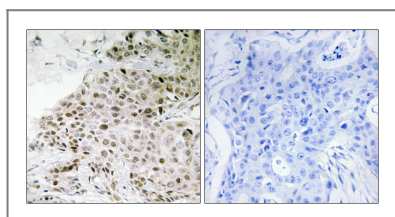
Immunogen The antiserum was produced against synthesized peptide derived from human TAF13. AA range: 71-120

Specificity TAF II p18 Polyclonal Antibody detects endogenous levels of TAF II p18 protein.

Target Information

Gene name	TAF13		
Protein Name	Transcription initiation factor TFIID subunit 13		
	Organism	Gene ID	UniProt ID
	Human	6884;	Q15543;
	Mouse	99730;	P61216;
Cellular Localization	Nucleus .		
Tissue specificity	PCR rescued clones,		
Function	Domain:The binding of TAF10 and TAF11 requires distinct domains of TAF13.,Function:TFIID beta-specific TAFII.,similarity:Belongs to the TAF13 family.,similarity:Contains 1 histone-fold domain.,subunit:TFIID is composed of TATA binding protein (TBP) and a number of TBP-associated factors (TAFs). Interacts with TBP, and more strongly with TAF10 and TAF11.,		

Validation Data



Immunohistochemistry analysis of paraffin-embedded human breast carcinoma tissue, using TAF13 Antibody. The picture on the right is blocked with the synthesized peptide.

Contact information

Orders: order@immunoway.com
 Support: tech@immunoway.com
 Telephone: 877-594-3616 (Toll Free), 408-747-0185
 Website: <http://www.immunoway.com>
 Address: 2200 Ringwood Ave San Jose, CA 95131 USA



Please scan the QR code
 to access additional
 product information:
**TAF II p18 Rabbit
 pAb**

For Research Use Only. Not for Use in Diagnostic Procedures.

[Antibody](#) | [ELISA Kits](#) | [Protein](#) | [Reagents](#)