

TAF I p48 Rabbit pAb

CatalogNo: YT4525

Key Features

Host Species

- Rabbit

Reactivity

- Human, Rat

Applications

- WB, IHC, IF, ELISA

MW

- 53kD (Observed)

Isotype

- IgG

Recommended Dilution Ratios

WB 1:500-1:2000

IHC 1:100-1:300

ELISA 1:20000

IF 1:50-200

Storage

Storage*

-15°C to -25°C/1 year (Do not lower than -25°C)

Formulation

Liquid in PBS containing 50% glycerol, 0.5% BSA and 0.02% sodium azide.

Basic Information

Clonality

Polyclonal

Immunogen Information

Immunogen

The antiserum was produced against synthesized peptide derived from human TAF1A. AA range: 301-350

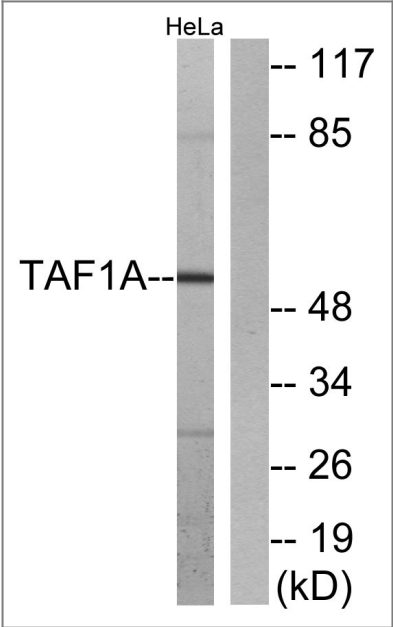
Specificity

TAF I p48 Polyclonal Antibody detects endogenous levels of TAF I p48 protein.

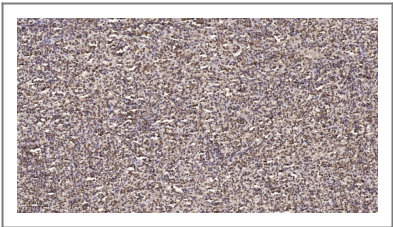
Target Information

Gene name	TAF1A		
Protein Name	TATA box-binding protein-associated factor RNA polymerase I subunit A		
	Organism	Gene ID	UniProt ID
	Human	9015;	Q15573;
	Mouse		P97357;
	Rat	360893;	Q3B7U2;
Cellular Localization	Nucleus.		
Tissue specificity	Embryo,Skin,		
Function	Function:Component of the transcription factor SL1/TIFIB complex involved in the assembly of the PIC (preinitiation complex).,subunit:Component of the transcription factor SL1/TIFIB complex which is composed of TBP and at least TAF1A, TAF1B and TAF1C. In the complex, interacts directly with TBP, TAF1B and TAF1C. Interaction of the SL1/TIFIB subunits with TBP excludes interaction with the transcription factor IID (TFIID) subunits. This mutually exclusive binding directs the formation of promoter and RNA polymerase-selective TBP-TAF complexes.,		

Validation Data



Western blot analysis of lysates from HeLa cells, using TAF1A Antibody. The lane on the right is blocked with the synthesized peptide.



Immunohistochemical analysis of paraffin-embedded human spleen. 1, Tris-EDTA,pH9.0 was used for antigen retrieval. 2 Antibody was diluted at 1:200(4° overnight.3,Secondary antibody was diluted at 1:200(room temperature, 45min).

| Contact information

Orders: order@immunoway.com
Support: tech@immunoway.com
Telephone: 877-594-3616 (Toll Free), 408-747-0185
Website: <http://www.immunoway.com>
Address: 2200 Ringwood Ave San Jose, CA 95131 USA



Please scan the QR code
to access additional
product information:
**TAF I p48 Rabbit
pAb**

For Research Use Only. Not for Use in Diagnostic Procedures.

[Antibody](#) | [ELISA Kits](#) | [Protein](#) | [Reagents](#)