

TADA2L Rabbit pAb

CatalogNo: YT4524

Key Features

Host Species

- Rabbit

Reactivity

- Human, Mouse, Rat, Monkey

Applications

- WB, ELISA

MW

- 47kD (Observed)

Isotype

- IgG

Recommended Dilution Ratios

WB 1:500-1:2000

ELISA 1:10000

Not yet tested in other applications.

Storage

Storage*

-15°C to -25°C/1 year (Do not lower than -25°C)

Formulation

Liquid in PBS containing 50% glycerol, 0.5% BSA and 0.02% sodium azide.

Basic Information

Clonality

Polyclonal

Immunogen Information

Immunogen

The antiserum was produced against synthesized peptide derived from human ADA2L. AA range: 206-255

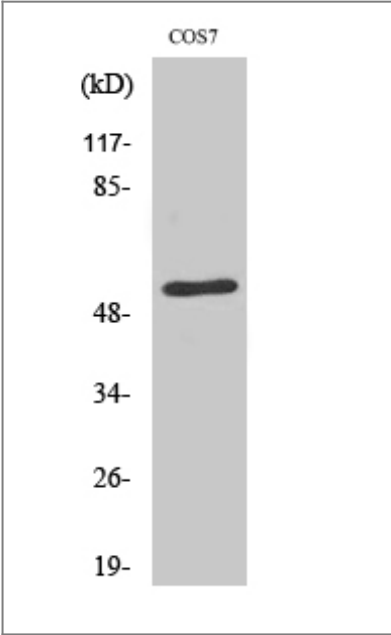
Specificity

TADA2L Polyclonal Antibody detects endogenous levels of TADA2L protein.

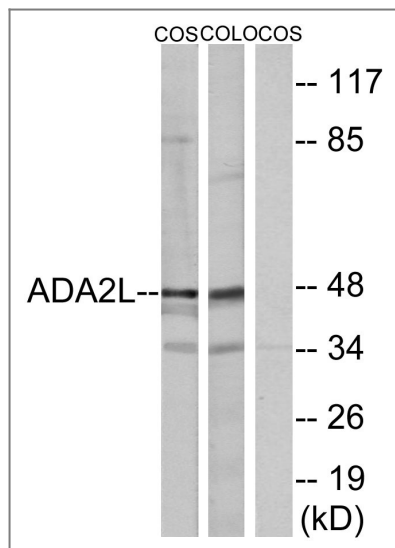
Target Information

Gene name	TADA2A		
Protein Name	Transcriptional adapter 2-alpha		
	Organism	Gene ID	UniProt ID
	Human	6871 ;	O75478 ;
	Mouse	217031 ;	Q8CHV6 ;
	Rat	360581 ;	Q6AYE3 ;
Cellular Localization	Nucleus . Chromosome .		
Tissue specificity	Expressed in all tissues, but most abundantly in testis.		
Function	Function: Binds double-stranded DNA. Binds dinucleosomes, probably at the linker region between neighboring nucleosomes. Plays a role in chromatin remodeling (By similarity). Required for the function of some acidic activation domains, which activate transcription from a distant site., similarity: Contains 1 SANT domain., similarity: Contains 1 SWIRM domain., subunit: Interacts with GCN5 and NR3C1. Associated with the P/CAF protein in the PCAF complex. Component of the PCAF complex, at least composed of TADA2L/ADA2, TADA3L/ADA3, TAF5L/PAF65-beta, TAF6L/PAF65-alpha, TAF10/TAFII30, TAF12/TAFII20, TAF9/TAFII31 and TRRAP., tissue specificity: Expressed in all tissues, but most abundantly in testis.,		

Validation Data



Western Blot analysis of various cells using TADA2L Polyclonal Antibody diluted at 1:2000 cells nucleus extracted by Minute TM Cytoplasmic and Nuclear Fractionation kit (SC-003, Invent biotech, MN, USA).



Western blot analysis of lysates from COS7 and COLO205 cells, using ADA2L Antibody. The lane on the right is blocked with the synthesized peptide.

Contact information

Orders: order@immunoway.com
 Support: tech@immunoway.com
 Telephone: 877-594-3616 (Toll Free), 408-747-0185
 Website: <http://www.immunoway.com>
 Address: 2200 Ringwood Ave San Jose, CA 95131 USA



Please scan the QR code to access additional product information:
TADA2L Rabbit pAb

For Research Use Only. Not for Use in Diagnostic Procedures.

[Antibody](#) | [ELISA Kits](#) | [Protein](#) | [Reagents](#)