

## T2R3 Rabbit pAb

CatalogNo: YT4508

### | Key Features

#### Host Species

- Rabbit

#### Reactivity

- Human,Rat,Mouse,

#### Applications

- IF,ELISA

#### MW

- 36kD (Calculated)

#### Isotype

- IgG

### | Recommended Dilution Ratios

**IF 1:200-1:1000**

**ELISA 1:20000**

**Not yet tested in other applications**

### | Storage

#### Storage\*

-15°C to -25°C/1 year(Do not lower than -25°C)

#### Formulation

Liquid in PBS containing 50% glycerol, 0.5% BSA and 0.02% sodium azide.

### | Basic Information

#### Clonality

Polyclonal

### | Immunogen Information

#### Immunogen

The antiserum was produced against synthesized peptide derived from human TAS2R3. AA range:140-189

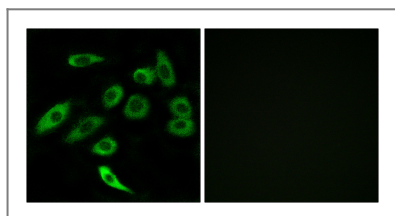
#### Specificity

T2R3 Polyclonal Antibody detects endogenous levels of T2R3 protein.

### | Target Information

<b>Gene name</b>	TAS2R3		
<b>Protein Name</b>	Taste receptor type 2 member 3		
	<b>Organism</b>	<b>Gene ID</b>	<b>UniProt ID</b>
	Human	<a href="#">50831</a> ;	<a href="#">Q9NYW6</a> ;
	Mouse		<a href="#">Q7TQA7</a> ;
<b>Cellular Localization</b>	Membrane; Multi-pass membrane protein.		
<b>Tissue specificity</b>	Expressed in subsets of taste receptor cells of the tongue and palate epithelium and exclusively in gustducin-positive cells. Expressed in the antrum and fundus (part of the stomach), duodenum and in gastric endocrine cells.		
<b>Function</b>	Function:Gustducin-coupled receptor implicated in the perception of bitter compounds in the oral cavity and the gastrointestinal tract. Signals through PLCB2 and the calcium-regulated cation channel TRPM5.,miscellaneous:Several bitter taste receptors are expressed in a single taste receptor cell.,similarity:Belongs to the G-protein coupled receptor T2R family.,tissue specificity:Expressed in subsets of taste receptor cells of the tongue and palate epithelium and exclusively in gustducin-positive cells. Expressed in the antrum and fundus (part of the stomach), duodenum and in gastric endocrine cells.,		

## Validation Data



Immunofluorescence analysis of A549 cells, using TAS2R3 Antibody. The picture on the right is blocked with the synthesized peptide.

## Contact information

Orders: [order@immunoway.com](mailto:order@immunoway.com)  
 Support: [tech@immunoway.com](mailto:tech@immunoway.com)  
 Telephone: 877-594-3616 (Toll Free), 408-747-0185  
 Website: <http://www.immunoway.com>  
 Address: 2200 Ringwood Ave San Jose, CA 95131 USA



Please scan the QR code to access additional product information:  
**T2R3 Rabbit pAb**