

## Synuclein- $\gamma$ Rabbit pAb

CatalogNo: YT4499

### | Key Features

#### Host Species

- Rabbit

#### Reactivity

- Human,Rat,Mouse,

#### Applications

- WB,IHC,IF,ELISA

#### MW

- 20kD (Observed)

#### Isotype

- IgG

### | Recommended Dilution Ratios

**WB 1:500-1:2000**

**IHC 1:100-1:300**

**ELISA 1:10000**

**IF 1:50-200**

### | Storage

#### Storage\*

-15°C to -25°C/1 year(Do not lower than -25°C)

#### Formulation

Liquid in PBS containing 50% glycerol, 0.5% BSA and 0.02% sodium azide.

### | Basic Information

#### Clonality

Polyclonal

### | Immunogen Information

#### Immunogen

The antiserum was produced against synthesized peptide derived from human Synuclein gamma. AA range:78-127

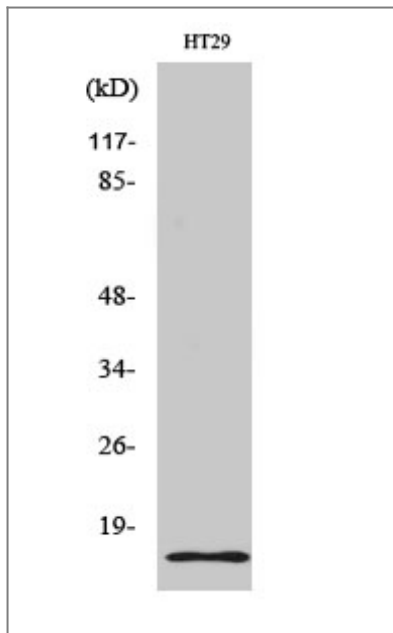
#### Specificity

Synuclein- $\gamma$  Polyclonal Antibody detects endogenous levels of Synuclein- $\gamma$  protein.

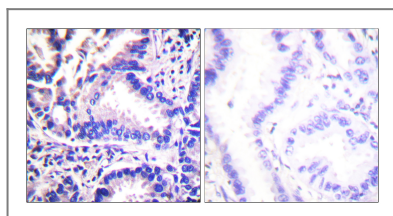
### | Target Information

Gene name	SNCG		
Protein Name	Gamma-synuclein		
	Organism	Gene ID	UniProt ID
	Human	<a href="#">6623</a> ;	<a href="#">O76070</a> ;
	Mouse		<a href="#">Q9Z0F7</a> ;
Cellular Localization	Cytoplasm, perinuclear region . Cytoplasm, cytoskeleton, microtubule organizing center, centrosome . Cytoplasm, cytoskeleton, spindle . Associated with centrosomes in several interphase cells. In mitotic cells, localized to the poles of the spindle.		
Tissue specificity	Highly expressed in brain, particularly in the substantia nigra. Also expressed in the corpus callosum, heart, skeletal muscle, ovary, testis, colon and spleen. Weak expression in pancreas, kidney and lung.		
Function	Disease:Brain iron accumulation type 1 (NBIA1, also called Hallervorden-Spatz syndrome), a rare neuroaxonal dystrophy, is histologically characterized by axonal spheroids, iron deposition, Lewy body (LB)-like intraneuronal inclusions, glial inclusions and neurofibrillary tangles. SNCG is found in spheroids but not in inclusions.,Function:Plays a role in neurofilament network integrity. May be involved in modulating axonal architecture during development and in the adult. In vitro, increases the susceptibility of neurofilament-H to calcium-dependent proteases (By similarity). May also function in modulating the keratin network in skin. Activates the MAPK and Elk-1 signal transduction pathway.,PTM:Phosphorylated. Phosphorylation by GRK5 appears to occur on residues distinct from the residue phosphorylated by other kinases.,similarity:Belongs to the synuclein family.,subcellular location:Associated with centrosomes in several interphase cells. In mitotic cells, localized to the poles of the spindle.,subunit:May be a centrosome-associated protein.,tissue specificity:Highly expressed in brain, particularly in the substantia nigra. Also expressed in the corpus callosum, heart, skeletal muscle, ovary, testis, colon and spleen. Weak expression in pancreas, kidney and lung.,		

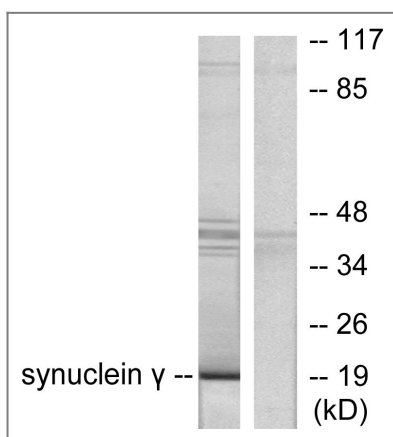
| Validation Data



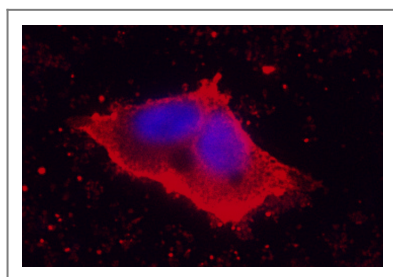
Western Blot analysis of various cells using Synuclein-γ Polyclonal Antibody



Immunohistochemistry analysis of paraffin-embedded human lung carcinoma tissue, using Synuclein gamma Antibody. The picture on the right is blocked with the synthesized peptide.



Western blot analysis of lysates from HT29 cells, using Synuclein gamma Antibody. The lane on the right is blocked with the synthesized peptide.



Immunofluorescence analysis of MCF7 cell. 1, primary Antibody was diluted at 1:100 (4°C overnight). 2, Goat Anti Rabbit IgG (H&L) - AFuor 594 Secondary antibody (catalog No: RS3611) was diluted at 1:500 (room temperature, 50min).

## Contact information

Orders: order@immunoway.com  
Support: tech@immunoway.com  
Telephone: 877-594-3616 (Toll Free), 408-747-0185  
Website: <http://www.immunoway.com>  
Address: 2200 Ringwood Ave San Jose, CA 95131 USA



Please scan the QR code  
to access additional  
product information:  
**Synuclein- $\gamma$  Rabbit  
pAb**

---

For Research Use Only. Not for Use in Diagnostic Procedures.

[Antibody](#) | [ELISA Kits](#) | [Protein](#) | [Reagents](#)