

Synaptotagmin XIII Rabbit pAb

CatalogNo: YT4488

Key Features

Host Species

- Rabbit

Reactivity

- Human, Mouse, Rat

Applications

- WB, ELISA

MW

- 48kD (Observed)

Isotype

- IgG

Recommended Dilution Ratios

WB 1:500-1:2000

ELISA 1:10000

Not yet tested in other applications.

Storage

Storage* -15°C to -25°C/1 year (Do not lower than -25°C)

Formulation Liquid in PBS containing 50% glycerol, 0.5% BSA and 0.02% sodium azide.

Basic Information

Clonality Polyclonal

Immunogen Information

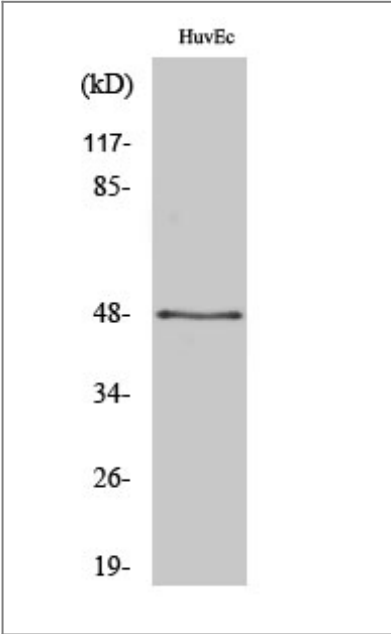
Immunogen The antiserum was produced against synthesized peptide derived from human SYT13. AA range: 321-370

Specificity Synaptotagmin XIII Polyclonal Antibody detects endogenous levels of Synaptotagmin XIII protein.

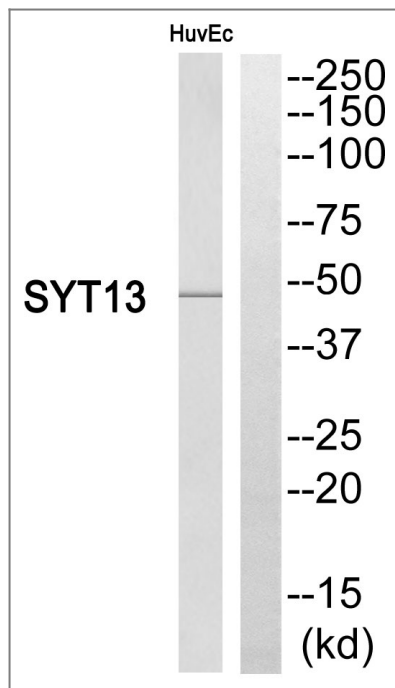
Target Information

Gene name	SYT13		
Protein Name	Synaptotagmin-13		
	Organism	Gene ID	UniProt ID
	Human	57586;	Q7L8C5;
	Mouse	80976;	Q9EQT6;
	Rat	80977;	Q925B5;
Cellular Localization	Membrane ; Single-pass membrane protein .		
Tissue specificity	Expressed in brain, pancreas and kidney.		
Function	Domain:The first C2 domain/C2A does not mediate Ca(2+)-dependent phospholipid binding.,Domain:The second C2 domain/C2B domain binds phospholipids regardless of whether calcium is present.,Function:May be involved in transport vesicle docking to the plasma membrane.,similarity:Belongs to the synaptotagmin family.,similarity:Contains 2 C2 domains.,subunit:Interacts with NRXN1.,tissue specificity:Expressed in brain, pancreas and kidney.,		

| Validation Data



Western Blot analysis of various cells using Synaptotagmin XIII Polyclonal Antibody



Western blot analysis of SYT13 Antibody. The lane on the right is blocked with the SYT13 peptide.

Contact information

Orders: order@immunoway.com
 Support: tech@immunoway.com
 Telephone: 877-594-3616 (Toll Free), 408-747-0185
 Website: <http://www.immunoway.com>
 Address: 2200 Ringwood Ave San Jose, CA 95131 USA



Please scan the QR code to access additional product information:
Synaptotagmin XIII
Rabbit pAb

For Research Use Only. Not for Use in Diagnostic Procedures.

[Antibody](#) | [ELISA Kits](#) | [Protein](#) | [Reagents](#)