

SURF-1 Rabbit pAb

CatalogNo: YT4471

| Key Features

Host Species

- Rabbit

Reactivity

- Human, Mouse, Rat

Applications

- WB, IHC, IF, ELISA

MW

- 30kD (Observed)

Isotype

- IgG

| Recommended Dilution Ratios

WB 1:500-1:2000

IHC 1:100-1:300

IF 1:200-1:1000

ELISA 1:20000

Not yet tested in other applications.

| Storage

Storage*

-15°C to -25°C/1 year (Do not lower than -25°C)

Formulation

Liquid in PBS containing 50% glycerol, 0.5% BSA and 0.02% sodium azide.

| Basic Information

Clonality

Polyclonal

| Immunogen Information

Immunogen

The antiserum was produced against synthesized peptide derived from human SURF1. AA range: 171-220

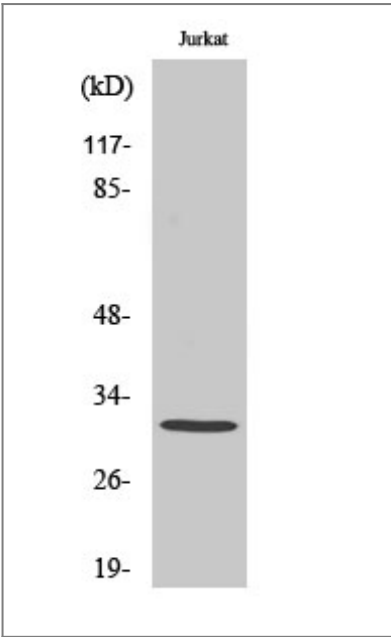
Specificity

SURF-1 Polyclonal Antibody detects endogenous levels of SURF-1 protein.

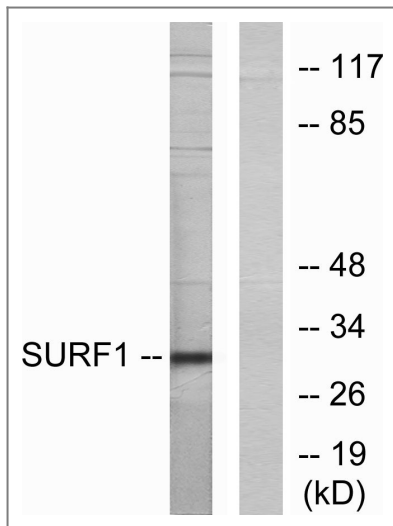
Target Information

Gene name	SURF1		
Protein Name	Surfeit locus protein 1		
	Organism	Gene ID	UniProt ID
	Human	6834 ;	Q15526 ;
	Mouse	20930 ;	P09925 ;
	Rat	64463 ;	Q9QXU2 ;
Cellular Localization	Mitochondrion inner membrane ; Multi-pass membrane protein .		
Tissue specificity	Colon,Kidney,Skin,Stomach,		
Function	Disease:Defects in SURF1 are a cause of Leigh syndrome (LS) [MIM:256000]. LS is a severe neurological disorder characterized by bilaterally symmetrical necrotic lesions in subcortical brain regions that is commonly associated with systemic cytochrome c oxidase (COX) deficiency.,Function:Probably involved in the biogenesis of the COX complex.,similarity:Belongs to the SURF1 family.,		

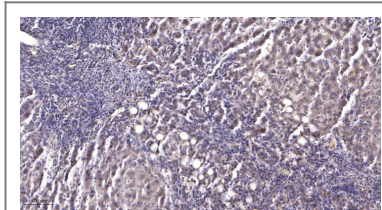
Validation Data



Western Blot analysis of Jurkat cells using SURF-1 Polyclonal Antibody



Western blot analysis of lysates from Jurkat cells, using SURF1 Antibody. The lane on the right is blocked with the synthesized peptide.



Immunohistochemical analysis of paraffin-embedded human liver cancer. 1, Antibody was diluted at 1:200(4° overnight). 2, Tris-EDTA,pH9.0 was used for antigen retrieval. 3,Secondary antibody was diluted at 1:200(room temperature, 45min).

| Contact information

Orders: order@immunoway.com
Support: tech@immunoway.com
Telephone: 877-594-3616 (Toll Free), 408-747-0185
Website: <http://www.immunoway.com>
Address: 2200 Ringwood Ave San Jose, CA 95131 USA



Please scan the QR code to access additional product information:
SURF-1 Rabbit pAb

For Research Use Only. Not for Use in Diagnostic Procedures.

[Antibody](#) | [ELISA Kits](#) | [Protein](#) | [Reagents](#)