

SUHW3 Rabbit pAb

CatalogNo: YT4468

Key Features

Host Species

- Rabbit

Reactivity

- Human, Mouse

Applications

- WB, IHC, IF, ELISA

MW

- 85kD (Observed)

Isotype

- IgG

Recommended Dilution Ratios

WB 1:500-1:2000**IHC 1:100-1:300****ELISA 1:40000****IF 1:50-200**

Storage

Storage*

-15°C to -25°C/1 year (Do not lower than -25°C)

Formulation

Liquid in PBS containing 50% glycerol, 0.5% BSA and 0.02% sodium azide.

Basic Information

Clonality

Polyclonal

Immunogen Information

Immunogen

The antiserum was produced against synthesized peptide derived from human ZNF280C. AA range: 251-300

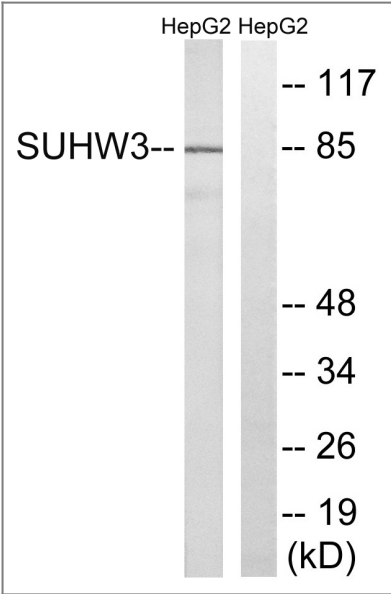
Specificity

SUHW3 Polyclonal Antibody detects endogenous levels of SUHW3 protein.

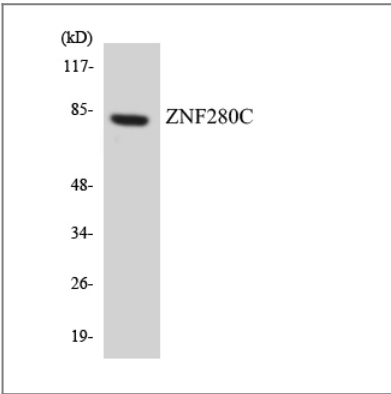
Target Information

Gene name	ZNF280C		
Protein Name	Zinc finger protein 280C		
	Organism	Gene ID	UniProt ID
	Human	55609 ;	Q8ND82 ;
	Mouse		Q6P3Y5 ;
Cellular Localization	Nucleus .		
Tissue specificity	Colon,Testis,		
Function	Function:May function as a transcription factor.,PTM:Phosphorylated upon DNA damage, probably by ATM or ATR.,sequence Caution:Contaminating sequence. Potential poly-A sequence.,similarity:Contains 5 C2H2-type zinc fingers.,		

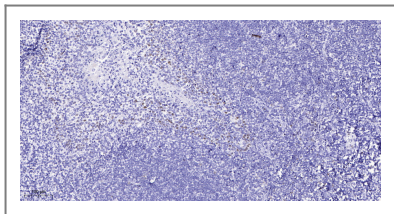
Validation Data



Western blot analysis of lysates from HepG2 cells, using ZNF280C Antibody. The lane on the right is blocked with the synthesized peptide.



Western blot analysis of the lysates from HeLa cells using ZNF280C antibody.



Immunohistochemical analysis of paraffin-embedded human tonsil. 1, Antibody was diluted at 1:200(4° overnight). 2, Tris-EDTA,pH9.0 was used for antigen retrieval. 3,Secondary antibody was diluted at 1:200(room temperature, 45min).

| Contact information

Orders: order@immunoway.com
Support: tech@immunoway.com
Telephone: 877-594-3616 (Toll Free), 408-747-0185
Website: <http://www.immunoway.com>
Address: 2200 Ringwood Ave San Jose, CA 95131 USA



Please scan the QR code
to access additional
product information:
SUHW3 Rabbit pAb

For Research Use Only. Not for Use in Diagnostic Procedures.

[Antibody](#) | [ELISA Kits](#) | [Protein](#) | [Reagents](#)