

## Stonin-1 Rabbit pAb

CatalogNo: YT4463

### Key Features

#### Host Species

- Rabbit

#### Reactivity

- Human, Mouse

#### Applications

- WB, IHC, IF, ELISA

#### MW

- 83kD (Observed)

#### Isotype

- IgG

### Recommended Dilution Ratios

**WB 1:500-1:2000**

**IHC 1:100-1:300**

**IF 1:200-1:1000**

**ELISA 1:10000**

**Not yet tested in other applications.**

### Storage

#### Storage\*

-15°C to -25°C/1 year (Do not lower than -25°C)

#### Formulation

Liquid in PBS containing 50% glycerol, 0.5% BSA and 0.02% sodium azide.

### Basic Information

#### Clonality

Polyclonal

### Immunogen Information

#### Immunogen

The antiserum was produced against synthesized peptide derived from human STON1. AA range: 686-735

#### Specificity

Stonin-1 Polyclonal Antibody detects endogenous levels of Stonin-1 protein.

## Target Information

Gene name STON1

Protein Name Stonin-1

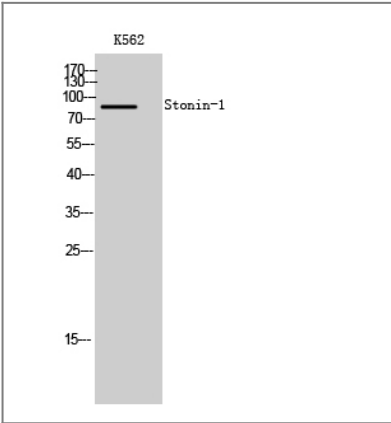
Organism	Gene ID	UniProt ID
Human	<a href="#">11037</a> ;	<a href="#">Q9Y6Q2</a> ;
Mouse		<a href="#">Q8CDJ8</a> ;

Cellular Localization Cytoplasm . Membrane . Some fraction is membrane-associated.

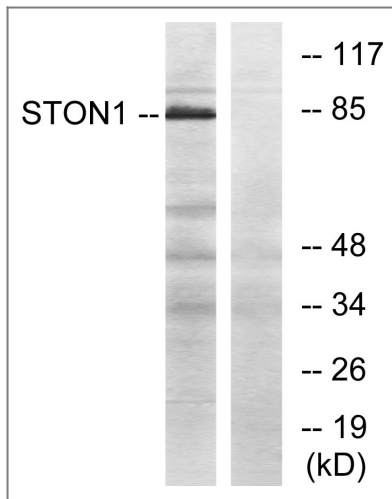
Tissue specificity Ubiquitous.

Function Caution:The sequence shown here is derived from an Ensembl automatic analysis pipeline and should be considered as preliminary data.,Function:May be involved in the endocytic machinery.,Function:May function as a testis specific transcription factor. Binds DNA in conjunction with GTF2A2 and TBP (the TATA-binding protein) and together with GTF2A2, allows mRNA transcription.,miscellaneous:In contrast to other members of the family, it does not contain NPF (Asn-Pro-Phe) sites and thereby does not interact with EPS15, EPS15R and ITSN1.,sequence Caution:Chimeric cDNA. The biological existence and relevance of this product of both SALF (AC Q9Y6Q2) and GTF2A1LF genes, creating a chimeric protein of 1182 residues is uncertain.,sequence Caution:Chimeric cDNA. The biological existence and relevance of this product of both SALF and GTF2A1LF (AC Q9UNN4) genes, which codes for a chimeric protein of 1182 residues is uncertain.,similarity:Belongs to the Stoned B family.,similarity:Belongs to the TFIIA subunit 1 family.,similarity:Contains 1 MHD (mu homology) domain.,similarity:Contains 1 SHD (stonin homology) domain.,subcellular location:Some fraction is membrane-associated.,tissue specificity:Testis specific.,tissue specificity:Ubiquitous.,

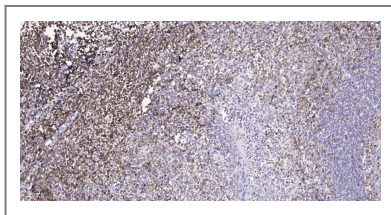
## Validation Data



Western Blot analysis of K562 cells using Stonin-1 Polyclonal Antibody



Western blot analysis of lysates from K562 cells, using STON1 Antibody. The lane on the right is blocked with the synthesized peptide.



Immunohistochemical analysis of paraffin-embedded human tonsil. 1, Tris-EDTA, pH 9.0 was used for antigen retrieval. 2 Antibody was diluted at 1:200 (4° overnight). 3, Secondary antibody was diluted at 1:200 (room temperature, 45min).

## Contact information

Orders: [order@immunoway.com](mailto:order@immunoway.com)  
 Support: [tech@immunoway.com](mailto:tech@immunoway.com)  
 Telephone: 877-594-3616 (Toll Free), 408-747-0185  
 Website: <http://www.immunoway.com>  
 Address: 2200 Ringwood Ave San Jose, CA 95131 USA



Please scan the QR code to access additional product information:  
**Stonin-1 Rabbit pAb**

For Research Use Only. Not for Use in Diagnostic Procedures.

[Antibody](#) | [ELISA Kits](#) | [Protein](#) | [Reagents](#)