

## Stathmin-3 Rabbit pAb

CatalogNo: YT4456

### Key Features

#### Host Species

- Rabbit

#### Reactivity

- Human, Mouse, Rat

#### Applications

- WB, ELISA, IHC

#### MW

- 22kD (Observed)

#### Isotype

- IgG

### Recommended Dilution Ratios

WB 1:500-2000

IHC 1:50-300

ELISA 1:2000-20000

### Storage

#### Storage\*

-15°C to -25°C/1 year (Do not lower than -25°C)

#### Formulation

Liquid in PBS containing 50% glycerol, 0.5% BSA and 0.02% sodium azide.

### Basic Information

#### Clonality

Polyclonal

### Immunogen Information

#### Immunogen

The antiserum was produced against synthesized peptide derived from human STMN3. AA range: 61-110

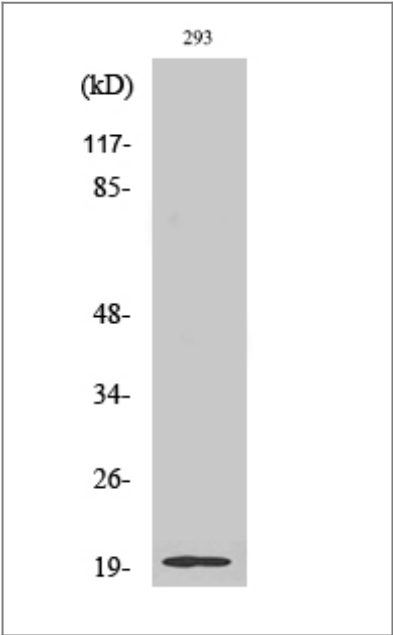
#### Specificity

Stathmin-3 Polyclonal Antibody detects endogenous levels of Stathmin-3 protein.

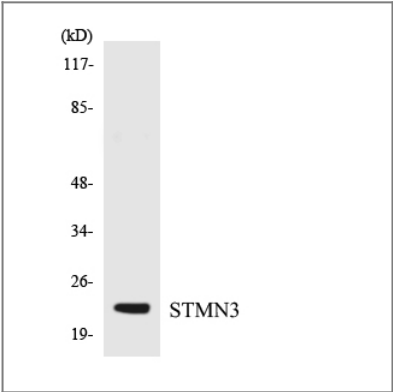
### Target Information

Gene name	STMN3		
Protein Name	Stathmin-3		
	Organism	Gene ID	UniProt ID
	Human	<a href="#">50861</a> ;	<a href="#">Q9NZ72</a> ;
	Mouse	<a href="#">20262</a> ;	<a href="#">O70166</a> ;
	Rat	<a href="#">29246</a> ;	<a href="#">Q9JHU6</a> ;
Cellular Localization	Golgi apparatus . Cell projection, growth cone . Cell projection, axon . Cytoplasm, cytosol .		
Tissue specificity	Neuron specific.		
Function	similarity:Belongs to the stathmin family.,tissue specificity:Neuron specific.,		

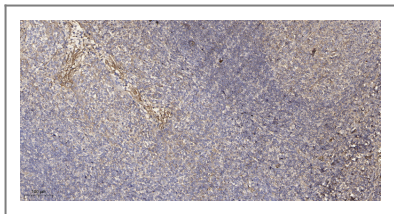
Validation Data



Western Blot analysis of various cells using Stathmin-3 Polyclonal Antibody



Western blot analysis of the lysates from K562 cells using STMN3 antibody.



Immunohistochemical analysis of paraffin-embedded human tonsil. 1, Antibody was diluted at 1:200(4° overnight). 2, Tris-EDTA,pH9.0 was used for antigen retrieval. 3,Secondary antibody was diluted at 1:200(room temperature, 45min).

## | Contact information

Orders: [order@immunoway.com](mailto:order@immunoway.com)  
Support: [tech@immunoway.com](mailto:tech@immunoway.com)  
Telephone: 877-594-3616 (Toll Free), 408-747-0185  
Website: <http://www.immunoway.com>  
Address: 2200 Ringwood Ave San Jose, CA 95131 USA



Please scan the QR code  
to access additional  
product information:  
**Stathmin-3 Rabbit  
pAb**

---

For Research Use Only. Not for Use in Diagnostic Procedures.

[Antibody](#) | [ELISA Kits](#) | [Protein](#) | [Reagents](#)