

## STAM2 Rabbit pAb

CatalogNo: YT4435

Orthogonal Validated 

### Key Features

**Host Species**

- Rabbit

**Reactivity**

- Human, Mouse

**Applications**

- WB, IHC, IF, ELISA

**MW**

- 58kD (Observed)

**Isotype**

- IgG

### Recommended Dilution Ratios

**WB 1:500-1:2000****IHC 1:100-1:300****IF 1:200-1:1000****ELISA 1:40000****Not yet tested in other applications.**

### Storage

**Storage\***

-15°C to -25°C/1 year (Do not lower than -25°C)

**Formulation**

Liquid in PBS containing 50% glycerol, 0.5% BSA and 0.02% sodium azide.

### Basic Information

**Clonality**

Polyclonal

### Immunogen Information

**Immunogen**

The antiserum was produced against synthesized peptide derived from human STAM2. AA range: 161-210

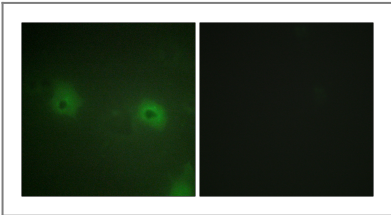
**Specificity**

STAM2 Polyclonal Antibody detects endogenous levels of STAM2 protein.

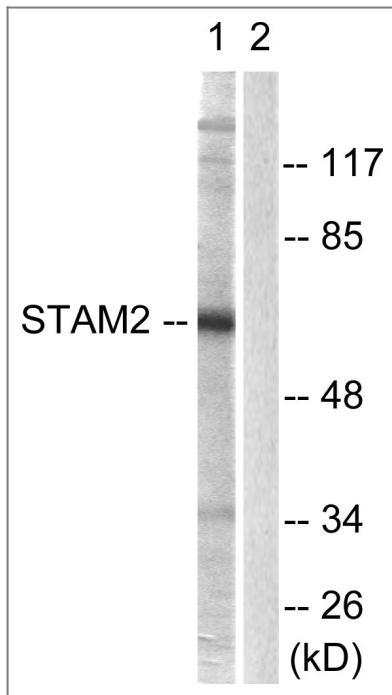
## | Target Information

Gene name	STAM2		
Protein Name	Signal transducing adapter molecule 2		
	Organism	Gene ID	UniProt ID
	Human	<a href="#">10254</a> ;	<a href="#">O75886</a> ;
	Mouse	<a href="#">56324</a> ;	<a href="#">O88811</a> ;
Cellular Localization	Cytoplasm . Early endosome membrane ; Peripheral membrane protein ; Cytoplasmic side .		
Tissue specificity	Ubiquitously expressed.		
Function	Domain:Contains one Pro-Xaa-Val-Xaa-Leu (PxVxL) motif, which is required for interaction with chromoshadow domains. This motif requires additional residues -7, -6, +4 and +5 of the central Val which contact the chromoshadow domain.,Domain:The SH3 domain mediates the interaction with USP8.,Domain:The VHS and UIM domains mediate the interaction with ubiquitinated proteins.,Function:Involved in intracellular signal transduction mediated by cytokines and growth factors. Upon IL-2 and GM-CSL stimulation, it plays a role in signaling leading to DNA synthesis and c-myc induction. May also play a role in T-cell development. Involved in down-regulation of receptor tyrosine kinase via multivesicular body (MVBs) when complexed with HGS (ESCRT-0 complex). The ESCRT-0 complex binds ubiquitin and acts as sorting machinery that recognizes ubiquitinated receptors and transfers them to further sequential lysosomal sorting/trafficking processes.,PTM:Phosphorylated in response to IL-2, GM-CSF, EGF and PDGF.,similarity:Belongs to the STAM family.,similarity:Contains 1 ITAM domain.,similarity:Contains 1 SH3 domain.,similarity:Contains 1 UIM (ubiquitin-interacting motif) repeat.,similarity:Contains 1 VHS domain.,subunit:Component of the ESCRT-0 complex composed of STAM or STAM2 and HGS. Part of a complex at least composed of HSG, STAM2 and EPS15. Interacts with JAK2 and JAK3. Interacts with ubiquitinated proteins and the deubiquitinating enzyme USP8/UBPY (By similarity). Interacts (via the via the PxVxL motif) with CBX5; the interaction is direct. Interacts with VPS37C. Interacts with ubiquitin; the interaction is direct.,tissue specificity:Ubiquitously expressed.,		

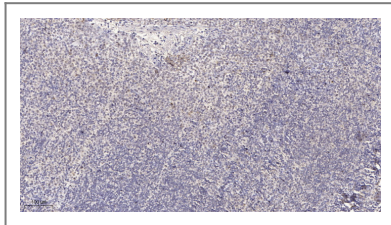
## | Validation Data



Immunofluorescence analysis of HUVEC cells, using STAM2 Antibody. The picture on the right is blocked with the synthesized peptide.



Western blot analysis of lysates from NIH/3T3 cells, treated with EGF 200ng/ml 30', using STAM2 Antibody. The lane on the right is blocked with the synthesized peptide.



Immunohistochemical analysis of paraffin-embedded human tonsil. 1, Antibody was diluted at 1:200(4° overnight). 2, Tris-EDTA,pH9.0 was used for antigen retrieval. 3,Secondary antibody was diluted at 1:200(room temperature, 30min).

## Contact information

Orders: [order@immunoway.com](mailto:order@immunoway.com)  
 Support: [tech@immunoway.com](mailto:tech@immunoway.com)  
 Telephone: 877-594-3616 (Toll Free), 408-747-0185  
 Website: <http://www.immunoway.com>  
 Address: 2200 Ringwood Ave San Jose, CA 95131 USA



Please scan the QR code to access additional product information:  
**STAM2 Rabbit pAb**

For Research Use Only. Not for Use in Diagnostic Procedures.

[Antibody](#) | [ELISA Kits](#) | [Protein](#) | [Reagents](#)