

## STAG3 Rabbit pAb

CatalogNo: YT4434

### | Key Features

#### Host Species

- Rabbit

#### Reactivity

- Human,Rat,Mouse,

#### Applications

- WB,IHC,IF,ELISA

#### MW

- 139kD (Observed)

#### Isotype

- IgG

### | Recommended Dilution Ratios

**WB 1:500-1:2000**

**IHC 1:100-1:300**

**ELISA 1:10000**

**IF 1:50-200**

### | Storage

#### Storage\*

-15°C to -25°C/1 year(Do not lower than -25°C)

#### Formulation

Liquid in PBS containing 50% glycerol, 0.5% BSA and 0.02% sodium azide.

### | Basic Information

#### Clonality

Polyclonal

### | Immunogen Information

#### Immunogen

The antiserum was produced against synthesized peptide derived from human STAG3.  
AA range:1161-1210

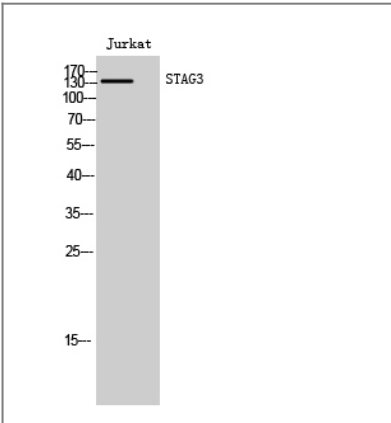
#### Specificity

STAG3 Polyclonal Antibody detects endogenous levels of STAG3 protein.

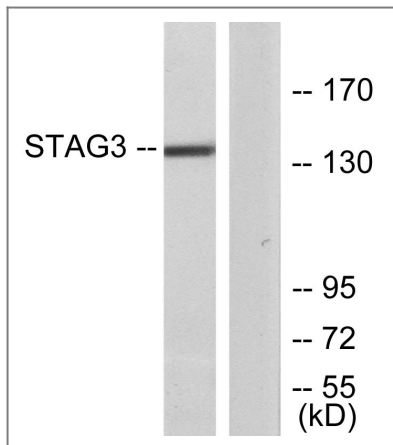
### | Target Information

Gene name	STAG3		
Protein Name	Cohesin subunit SA-3		
	Organism	Gene ID	UniProt ID
	Human	<a href="#">10734;</a>	<a href="#">Q9UJ98;</a>
	Mouse		<a href="#">O70576;</a>
Cellular Localization	Nucleus . Chromosome . Chromosome, centromere . Associates with chromatin. In prophase I stage of meiosis, it is found along the axial elements of synaptonemal complexes. In late-pachytene-diplotene, the bulk of protein dissociates from the chromosome arms probably because of phosphorylation by PLK1, except at centromeres, where cohesin complexes remain. It however remains chromatin associated at the centromeres up to metaphase I. During anaphase I, it probably dissociates from centromeres, allowing chromosomes segregation. .		
Tissue specificity	Testis specific.		
Function	Function:Meiosis specific component of cohesin complex. The cohesin complex is required for the cohesion of sister chromatids after DNA replication. The cohesin complex apparently forms a large proteinaceous ring within which sister chromatids can be trapped. At anaphase, the complex is cleaved and dissociates from chromatin, allowing sister chromatids to segregate. The meiosis-specific cohesin complex probably replaces mitosis specific cohesin complex when it dissociates from chromatin during prophase I.,similarity:Belongs to the SCC3 family.,similarity:Contains 1 SCD (stromalin conservative) domain.,subcellular location:Associates with chromatin. In prophase I stage of meiosis, it is found along the axial elements of synaptonemal complexes. In late-pachytene-diplotene, the bulk of protein dissociates from the chromosome arms probably because of phosphorylation by PLK, except at centromeres, where cohesin complexes remain. It however remains chromatin associated at the centromeres up to metaphase I. During anaphase I, it probably dissociates from centromeres, allowing chromosomes segregation.,subunit:Component of the meiosis-specific cohesin complex, which also contains the SMC1 (SMC1A or SMC1B) and SMC3 heterodimer. Such complex likely contains RAD21, or the meiosis-specific related protein REC8.,tissue specificity:Testis specific.,		

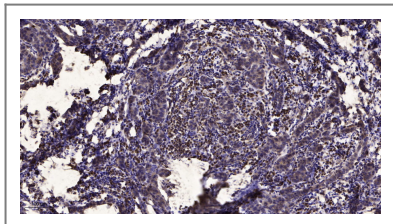
Validation Data



Western Blot analysis of Jurkat cells using STAG3 Polyclonal Antibody cells nucleus extracted by Minute TM Cytoplasmic and Nuclear Fractionation kit (SC-003,Inventbiotech,MN,USA).



Western blot analysis of lysates from Jurkat cells, using STAG3 Antibody. The lane on the right is blocked with the synthesized peptide.



Immunohistochemical analysis of paraffin-embedded human Breast cancer. 1, Antibody was diluted at 1:200(4° overnight). 2, Tris-EDTA, pH9.0 was used for antigen retrieval. 3, Secondary antibody was diluted at 1:200(room temperature, 45min).

## Contact information

Orders: [order@immunoway.com](mailto:order@immunoway.com)  
 Support: [tech@immunoway.com](mailto:tech@immunoway.com)  
 Telephone: 877-594-3616 (Toll Free), 408-747-0185  
 Website: <http://www.immunoway.com>  
 Address: 2200 Ringwood Ave San Jose, CA 95131 USA



Please scan the QR code to access additional product information:  
**STAG3 Rabbit pAb**

For Research Use Only. Not for Use in Diagnostic Procedures.

[Antibody](#) | [ELISA Kits](#) | [Protein](#) | [Reagents](#)