

SSH3 Rabbit pAb

CatalogNo: YT4428

Key Features

Host Species

- Rabbit

Reactivity

- Human, Mouse, Rat

Applications

- WB, IHC, IF, ELISA

MW

- 74kD (Observed)

Isotype

- IgG

Recommended Dilution Ratios

WB 1:500-1:2000

IHC 1:100-1:300

ELISA 1:40000

IF 1:50-200

Storage

Storage*

-15°C to -25°C/1 year (Do not lower than -25°C)

Formulation

Liquid in PBS containing 50% glycerol, 0.5% BSA and 0.02% sodium azide.

Basic Information

Clonality

Polyclonal

Immunogen Information

Immunogen

The antiserum was produced against synthesized peptide derived from human SSH3. AA range: 357-406

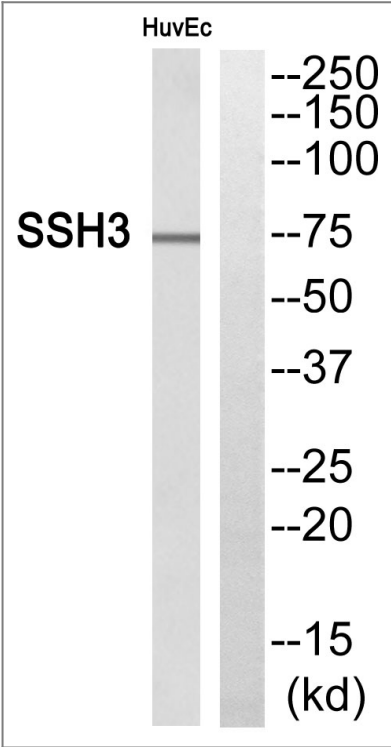
Specificity

SSH3 Polyclonal Antibody detects endogenous levels of SSH3 protein.

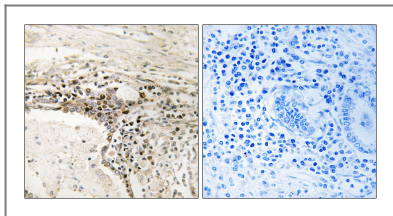
Target Information

| | | | |
|-----------------------|---|--------------------------|--------------------------|
| Gene name | SSH3 | | |
| Protein Name | Protein phosphatase Slingshot homolog 3 | | |
| | Organism | Gene ID | UniProt ID |
| | Human | 54961 ; | Q8TE77 ; |
| | Mouse | 245857 ; | Q8K330 ; |
| | Rat | 365396 ; | Q5XIS1 ; |
| Cellular Localization | Cytoplasm, cytoskeleton . Nucleus . | | |
| Tissue specificity | Cerebellum,Epithelium,Ovarian carcinoma,Uterus, | | |
| Function | Catalytic activity:A phosphoprotein + H(2)O = a protein + phosphate.,Catalytic activity:Protein tyrosine phosphate + H(2)O = protein tyrosine + phosphate.,Function:Protein phosphatase which may play a role in the regulation of actin filament dynamics. Can dephosphorylate and activate the actin binding/depolymerizing factor cofilin, which subsequently binds to actin filaments and stimulates their disassembly.,miscellaneous:Tyrosine phosphatase activity has not been demonstrated for this protein to date.,PTM:Phosphorylated upon DNA damage, probably by ATM or ATR.,similarity:Belongs to the protein-tyrosine phosphatase family.,similarity:Contains 1 tyrosine-protein phosphatase domain.,subunit:Does not bind to, or colocalize with, filamentous actin., | | |

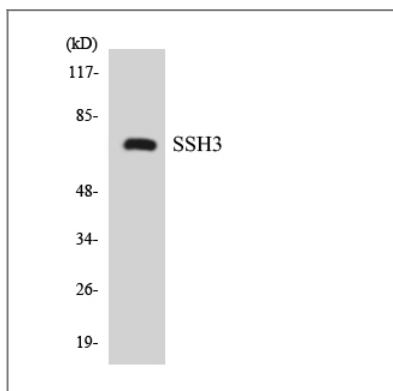
Validation Data



Western blot analysis of SSH3 Antibody. The lane on the right is blocked with the SSH3 peptide.



Immunohistochemistry analysis of paraffin-embedded human lung carcinoma, using SSH3 Antibody. The lane on the right is blocked with the SSH3 peptide.



Western blot analysis of the lysates from K562 cells using SSH3 antibody.

Contact information

Orders: order@immunoway.com
 Support: tech@immunoway.com
 Telephone: 877-594-3616 (Toll Free), 408-747-0185
 Website: <http://www.immunoway.com>
 Address: 2200 Ringwood Ave San Jose, CA 95131 USA



Please scan the QR code to access additional product information:
SSH3 Rabbit pAb

For Research Use Only. Not for Use in Diagnostic Procedures.

[Antibody](#) | [ELISA Kits](#) | [Protein](#) | [Reagents](#)