

## SRPK3 Rabbit pAb

CatalogNo: YT4423

### Key Features

#### Host Species

- Rabbit

#### Reactivity

- Human, Mouse, Rat

#### Applications

- WB, ELISA

#### MW

- 60kD (Observed)

#### Isotype

- IgG

### Storage

**Storage\*** -15°C to -25°C/1 year (Do not lower than -25°C)

**Formulation** Liquid in PBS containing 50% glycerol, 0.5% BSA and 0.02% sodium azide.

### Recommended Dilution Ratios

**WB 1:500-1:2000**

**ELISA 1:10000**

**Not yet tested in other applications.**

### Basic Information

**Clonality** Polyclonal

### Immunogen Information

**Immunogen** The antiserum was produced against synthesized peptide derived from human SRPK3. AA range: 261-310

**Specificity** SRPK3 Polyclonal Antibody detects endogenous levels of SRPK3 protein.

### Target Information

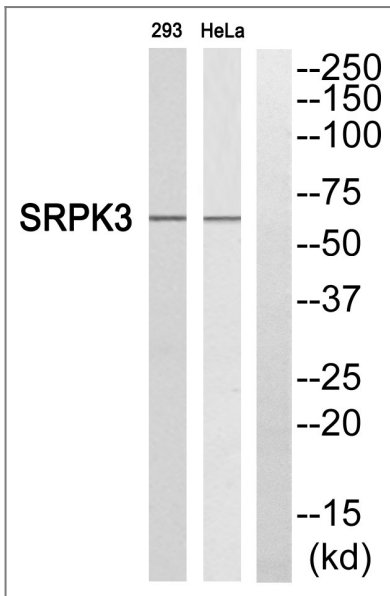
**Gene name** SRPK3  
**Protein Name** SRSF protein kinase 3

Organism	Gene ID	UniProt ID
Human	<a href="#">26576;</a>	<a href="#">Q9UPE1;</a>
Mouse	<a href="#">56504;</a>	<a href="#">Q9Z0G2;</a>

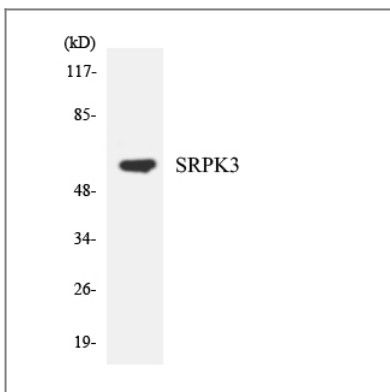
**Tissue specificity** Exclusively expressed in skeletal and heart muscle.

**Function** Catalytic activity:ATP + a protein = ADP + a phosphoprotein.,Function:Required for normal muscle development.,similarity:Belongs to the protein kinase superfamily.,similarity:Belongs to the protein kinase superfamily. CMGC Ser/Thr protein kinase family.,similarity:Contains 1 protein kinase domain.,tissue specificity:Exclusively expressed in skeletal and heart muscle.,

## Validation Data



Western blot analysis of SRPK3 Antibody. The lane on the right is blocked with the SRPK3 peptide.



Western blot analysis of the lysates from HeLa cells using SRPK3 antibody.

## | Contact information

Orders: order@immunoway.com  
Support: tech@immunoway.com  
Telephone: 877-594-3616 (Toll Free), 408-747-0185  
Website: <http://www.immunoway.com>  
Address: 2200 Ringwood Ave San Jose, CA 95131 USA



Please scan the QR code  
to access additional  
product information:  
**SRPK3 Rabbit pAb**

---

For Research Use Only. Not for Use in Diagnostic Procedures.

[Antibody](#) | [ELISA Kits](#) | [Protein](#) | [Reagents](#)