

SRp46 Rabbit pAb

CatalogNo: YT4419

Key Features

Host Species

- Rabbit

Reactivity

- Human

Applications

- WB,IHC,IF,ELISA

MW

- 32kD (Observed)

Isotype

- IgG

Storage

Storage* -15°C to -25°C/1 year(Do not lower than -25°C)**Formulation** Liquid in PBS containing 50% glycerol, 0.5% BSA and 0.02% sodium azide.

Recommended Dilution Ratios

WB 1:500-1:2000**IHC 1:100-1:300****ELISA 1:40000****IF 1:50-200**

Basic Information

Clonality Polyclonal

Immunogen Information

Immunogen The antiserum was produced against synthesized peptide derived from human SFRS2B. AA range:31-80**Specificity** SRp46 Polyclonal Antibody detects endogenous levels of SRp46 protein.

Target Information

Gene name SRSF8

Protein Name Serine/arginine-rich splicing factor 8

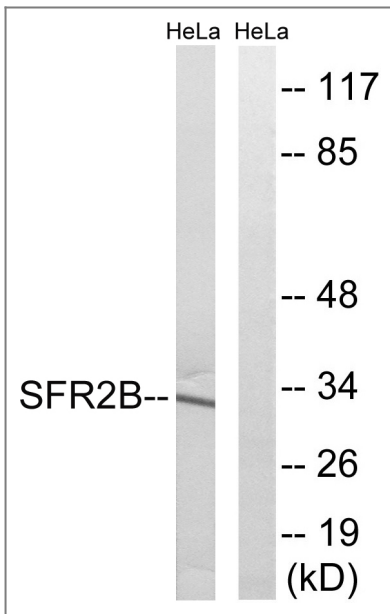
Organism	Gene ID	UniProt ID
Human	10929 ;	Q9BRL6 ;

Cellular Localization Nucleus .

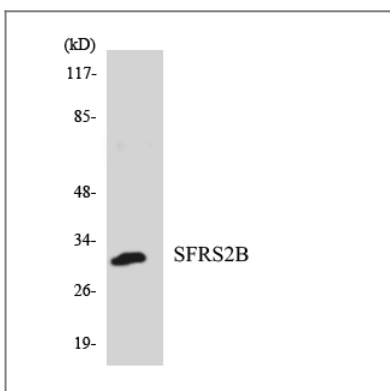
Tissue specificity Strongly expressed in pancreas, spleen and prostate. Weakly expressed in lung, liver and thymus.

Function Function:Involved in pre-mRNA alternative splicing.,PTM:Phosphorylated.,similarity:Belongs to the splicing factor SR family.,similarity:Contains 1 RRM (RNA recognition motif) domain.,tissue specificity:Strongly expressed in pancreas, spleen and prostate. Weakly expressed in lung, liver and thymus.,

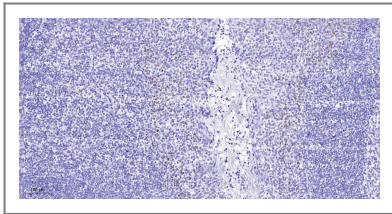
Validation Data



Western blot analysis of lysates from HeLa cells, using SFRS2B Antibody. The lane on the right is blocked with the synthesized peptide.



Western blot analysis of the lysates from HepG2 cells using SFRS2B antibody.



Immunohistochemical analysis of paraffin-embedded human tonsil. 1, Antibody was diluted at 1:200(4° overnight). 2, Tris-EDTA,pH9.0 was used for antigen retrieval. 3,Secondary antibody was diluted at 1:200(room temperature, 45min).

| Contact information

Orders: order@immunoway.com
Support: tech@immunoway.com
Telephone: 877-594-3616 (Toll Free), 408-747-0185
Website: <http://www.immunoway.com>
Address: 2200 Ringwood Ave San Jose, CA 95131 USA



Please scan the QR code to access additional product information:
SRp46 Rabbit pAb

For Research Use Only. Not for Use in Diagnostic Procedures.

[Antibody](#) | [ELISA Kits](#) | [Protein](#) | [Reagents](#)