

SRF Rabbit pAb

CatalogNo: YT4414

Orthogonal Validated 

Key Features

Host Species

- Rabbit

Reactivity

- Human, Mouse, Rat

Applications

- WB, IHC, IF, ELISA

MW

- 67kD (Observed)

Isotype

- IgG

Recommended Dilution Ratios

WB 1:500-1:2000**IHC 1:100-1:300****ELISA 1:5000****IF 1:50-200**

Storage

Storage* -15°C to -25°C/1 year (Do not lower than -25°C)**Formulation** Liquid in PBS containing 50% glycerol, 0.5% BSA and 0.02% sodium azide.

Basic Information

Clonality Polyclonal

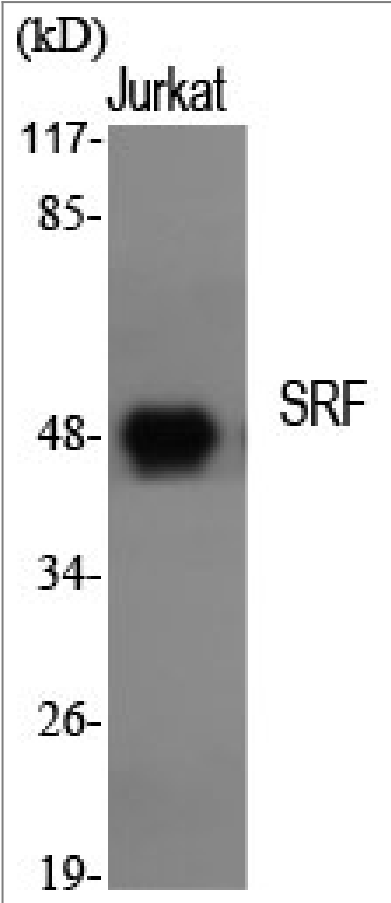
Immunogen Information

Immunogen The antiserum was produced against synthesized peptide derived from human SRF. AA range: 71-120**Specificity** SRF Polyclonal Antibody detects endogenous levels of SRF protein.

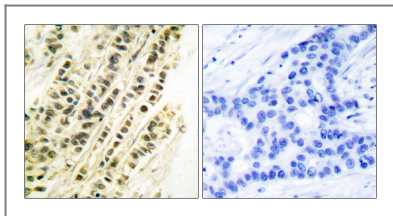
Target Information

Gene name	SRF		
Protein Name	Serum response factor		
	Organism	Gene ID	UniProt ID
	Human	6722;	P11831;
	Mouse	20807;	Q9J M73;
Cellular Localization	Nucleus .		
Tissue specificity	Brain,Epithelium,Lung,Lymph,		
Function	Function:SRF is a transcription factor that binds to the serum response element (SRE), a short sequence of dyad symmetry located 300 bp to the 5' of the site of transcription initiation of some genes (such as FOS). Required for cardiac differentiation and maturation.,PTM:Phosphorylated by PRKDC.,similarity:Contains 1 MADS-box domain.,subunit:Binds DNA as a multimer, probably a dimer. Interacts with MLLT7/FOXO4, NKX3A and SSRP1. Interacts with ARID2 and SRFBP1 (By similarity). Forms complexes with ARID2, MYOCD, NKX2-5 and SRFBP1.,		

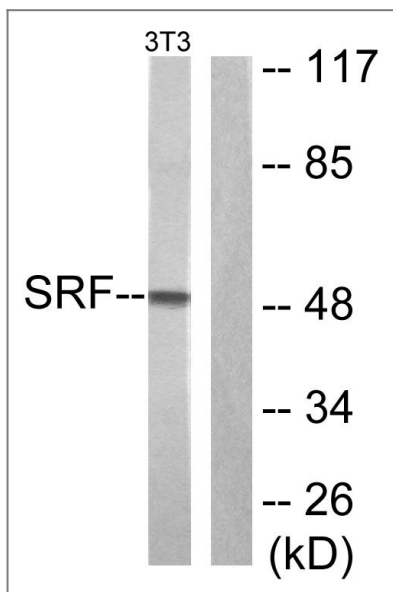
| Validation Data



Western Blot analysis of various cells using SRF Polyclonal Antibody



Immunohistochemistry analysis of paraffin-embedded human breast carcinoma tissue, using SRF Antibody. The picture on the right is blocked with the synthesized peptide.



Western blot analysis of lysates from NIH/3T3 cells, treated with PMA 125ng/ml 30', using SRF Antibody. The lane on the right is blocked with the synthesized peptide.

Contact information

Orders: order@immunoway.com
 Support: tech@immunoway.com
 Telephone: 877-594-3616 (Toll Free), 408-747-0185
 Website: <http://www.immunoway.com>
 Address: 2200 Ringwood Ave San Jose, CA 95131 USA



Please scan the QR code to access additional product information:
SRF Rabbit pAb

For Research Use Only. Not for Use in Diagnostic Procedures.

[Antibody](#) | [ELISA Kits](#) | [Protein](#) | [Reagents](#)