

Srb7 Rabbit pAb

CatalogNo: YT4410

Key Features

Host Species

- Rabbit

Reactivity

- Human, Mouse

Applications

- IHC, IF, ELISA

MW

- 16kD (Calculated)

Isotype

- IgG

Recommended Dilution Ratios

IHC 1:100-1:300

ELISA 1:20000

IF 1:50-200

Storage

Storage* -15°C to -25°C/1 year (Do not lower than -25°C)

Formulation Liquid in PBS containing 50% glycerol, 0.5% BSA and 0.02% sodium azide.

Basic Information

Clonality Polyclonal

Immunogen Information

Immunogen The antiserum was produced against synthesized peptide derived from human MED21. AA range: 71-120

Specificity Srb7 Polyclonal Antibody detects endogenous levels of Srb7 protein.

Target Information

Gene name MED21

Protein Name Mediator of RNA polymerase II transcription subunit 21

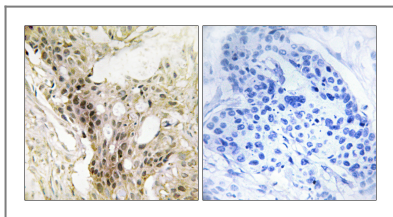
Organism	Gene ID	UniProt ID
Human	9412;	Q13503;
Mouse	108098;	Q9CQ39;

Cellular Localization Nucleus .

Tissue specificity Kidney,Liver,

Function Function:Component of the Mediator complex, a coactivator involved in the regulated transcription of nearly all RNA polymerase II-dependent genes. Mediator functions as a bridge to convey information from gene-specific regulatory proteins to the basal RNA polymerase II transcription machinery. Mediator is recruited to promoters by direct interactions with regulatory proteins and serves as a scaffold for the assembly of a functional preinitiation complex with RNA polymerase II and the general transcription factors.,similarity:Belongs to the Mediator complex subunit 21 family.,subunit:Interacts with PPARG (By similarity). Component of the Mediator complex, which is composed of MED1, MED4, MED6, MED7, MED8, MED9, MED10, MED11, MED12, MED13, MED13L, MED14, MED15, MED16, MED17, MED18, MED19, MED20, MED21, MED22, MED23, MED24, MED25, MED26, MED27, MED29, MED30, MED31, CCNC, CDK8 and CDC2L6/CDK11. The MED12, MED13, CCNC and CDK8 subunits form a distinct module termed the CDK8 module. Mediator containing the CDK8 module is less active than Mediator lacking this module in supporting transcriptional activation. Individual preparations of the Mediator complex lacking one or more distinct subunits have been variously termed ARC, CRSP, DRIP, PC2, SMCC and TRAP. Interacts with THRA in a ligand-dependent fashion.,

Validation Data



Immunohistochemistry analysis of paraffin-embedded human breast carcinoma tissue, using MED21 Antibody. The picture on the right is blocked with the synthesized peptide.

Contact information

Orders: order@immunoway.com
Support: tech@immunoway.com
Telephone: 877-594-3616 (Toll Free), 408-747-0185
Website: <http://www.immunoway.com>
Address: 2200 Ringwood Ave San Jose, CA 95131 USA



Please scan the QR code to access additional product information:
Srb7 Rabbit pAb

