

## SR-7 Rabbit pAb

CatalogNo: YT4409

### | Key Features

#### Host Species

- Rabbit

#### Reactivity

- Human, Mouse, Rat

#### Applications

- IF, ELISA

#### MW

- 54kD (Calculated)

#### Isotype

- IgG

### | Recommended Dilution Ratios

**IF 1:200-1:1000**

**ELISA 1:5000**

**Not yet tested in other applications**

### | Storage

#### Storage\*

-15°C to -25°C/1 year (Do not lower than -25°C)

#### Formulation

Liquid in PBS containing 50% glycerol, 0.5% BSA and 0.02% sodium azide.

### | Basic Information

#### Clonality

Polyclonal

### | Immunogen Information

#### Immunogen

The antiserum was produced against synthesized peptide derived from human HTR7. AA range: 391-440

#### Specificity

SR-7 Polyclonal Antibody detects endogenous levels of SR-7 protein.

### | Target Information

**Gene name** HTR7

**Protein Name** 5-hydroxytryptamine receptor 7

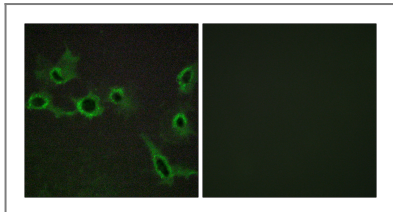
Organism	Gene ID	UniProt ID
Human	<a href="#">3363</a> ;	<a href="#">P34969</a> ;
Mouse	<a href="#">15566</a> ;	<a href="#">P32304</a> ;
Rat	<a href="#">65032</a> ;	<a href="#">P32305</a> ;

**Cellular Localization** Cell membrane; Multi-pass membrane protein.

**Tissue specificity** Isoform A is the predominant isoform in spleen, caudate and hippocampus. Isoform B is expressed at lower levels. Isoform D is a minor isoform in terms of expression.

**Function** Alternative products:Isoform A and isoform B appear to be expressed at higher levels,Function:This is one of the several different receptors for 5-hydroxytryptamine (serotonin), a biogenic hormone that functions as a neurotransmitter, a hormone, and a mitogen. The activity of this receptor is mediated by G proteins that stimulate adenylate cyclase.,similarity:Belongs to the G-protein coupled receptor 1 family.,tissue specificity:Isoform A is the predominant isoform in spleen, caudate and hippocampus. Isoform B is expressed at lower levels, and isoform D is a minor isoform.,

## Validation Data



Immunofluorescence analysis of COS7 cells, using HTR7 Antibody. The picture on the right is blocked with the synthesized peptide.

## Contact information

Orders: [order@immunoway.com](mailto:order@immunoway.com)  
Support: [tech@immunoway.com](mailto:tech@immunoway.com)  
Telephone: 877-594-3616 (Toll Free), 408-747-0185  
Website: <http://www.immunoway.com>  
Address: 2200 Ringwood Ave San Jose, CA 95131 USA



Please scan the QR code to access additional product information:  
**SR-7 Rabbit pAb**