

## Sp2 Rabbit pAb

CatalogNo: YT4375

### | Key Features

#### Host Species

- Rabbit

#### Reactivity

- Human, Mouse

#### Applications

- WB, IHC, IF, ELISA

#### MW

- 64kD (Observed)

#### Isotype

- IgG

### | Recommended Dilution Ratios

**WB 1:500-1:2000**

**IHC 1:100-1:300**

**ELISA 1:20000**

**IF 1:50-200**

### | Storage

#### Storage\*

-15°C to -25°C/1 year (Do not lower than -25°C)

#### Formulation

Liquid in PBS containing 50% glycerol, 0.5% BSA and 0.02% sodium azide.

### | Basic Information

#### Clonality

Polyclonal

### | Immunogen Information

#### Immunogen

The antiserum was produced against synthesized peptide derived from human SP2. AA range: 471-520

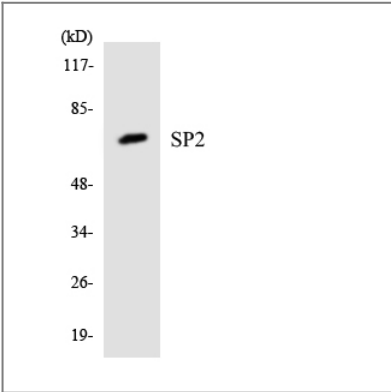
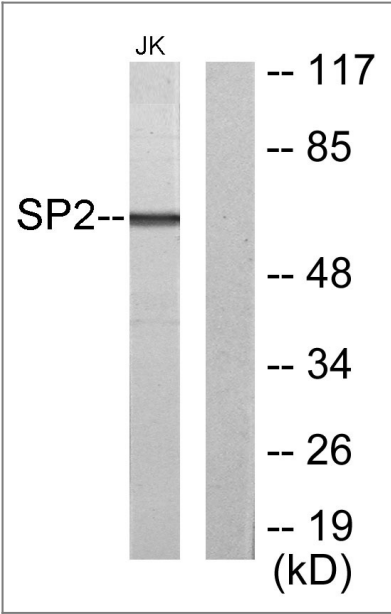
#### Specificity

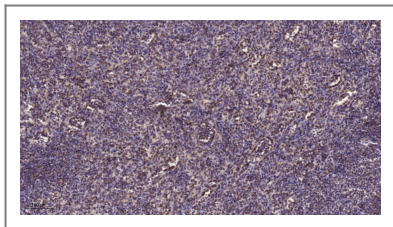
Sp2 Polyclonal Antibody detects endogenous levels of Sp2 protein.

### | Target Information

Gene name	SP2		
Protein Name	Transcription factor Sp2		
	Organism	Gene ID	UniProt ID
	Human	<a href="#">6668</a> ;	<a href="#">Q02086</a> ;
	Mouse	<a href="#">78912</a> ;	<a href="#">Q9D2H6</a> ;
Cellular Localization	Nucleus.		
Tissue specificity	Bone marrow,Brain,Lung,Lymph,Spleen,		
Function	Function: Binds to GC box promoters elements and selectively activates mRNA synthesis from genes that contain functional recognition sites.,similarity: Belongs to the Sp1 C2H2-type zinc-finger protein family.,similarity: Contains 3 C2H2-type zinc fingers.,		

| Validation Data





Immunohistochemical analysis of paraffin-embedded human spleen. 1, Tris-EDTA, pH 9.0 was used for antigen retrieval. 2 Antibody was diluted at 1:200 (4° overnight). 3, Secondary antibody was diluted at 1:200 (room temperature, 45 min).

## Contact information

Orders: [order@immunoway.com](mailto:order@immunoway.com)  
Support: [tech@immunoway.com](mailto:tech@immunoway.com)  
Telephone: 877-594-3616 (Toll Free), 408-747-0185  
Website: <http://www.immunoway.com>  
Address: 2200 Ringwood Ave San Jose, CA 95131 USA



Please scan the QR code to access additional product information:  
**Sp2 Rabbit pAb**

---

For Research Use Only. Not for Use in Diagnostic Procedures.

[Antibody](#) | [ELISA Kits](#) | [Protein](#) | [Reagents](#)