

Sox-8/9/17/18 Rabbit pAb

CatalogNo: YT4370

Orthogonal Validated 

Key Features

Host Species

- Rabbit

Reactivity

- Human, Mouse, Monkey

Applications

- WB, IHC, IF, ELISA

MW

- 47kD (Observed)

Isotype

- IgG

Recommended Dilution Ratios

WB 1:500-1:2000**IHC 1:100-1:300****ELISA 1:10000****IF 1:50-200**

Storage

Storage* -15°C to -25°C/1 year (Do not lower than -25°C)**Formulation** Liquid in PBS containing 50% glycerol, 0.5% BSA and 0.02% sodium azide.

Basic Information

Clonality Polyclonal

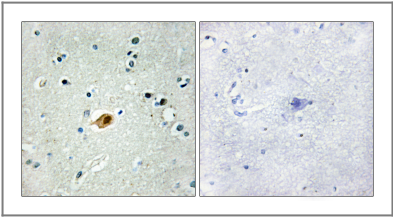
Immunogen Information

Immunogen The antiserum was produced against synthesized peptide derived from human SOX8/9/17/18. AA range: 116-165**Specificity** Sox-8/9/17/18 Polyclonal Antibody detects endogenous levels of Sox-8/9/17/18 protein.

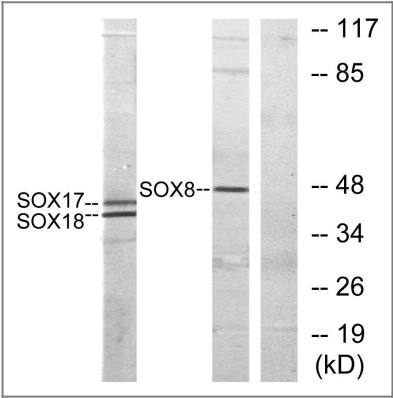
Target Information

Gene name	SOX8/9/17/18		
Protein Name	Transcription factor SOX-8/9/17/18		
	Organism	Gene ID	UniProt ID
	Human	30812 ; 6662 ; 64321 ; 54345 ;	P57073 ; P48436 ; Q9H6I2 ; P35713 ;
	Mouse	20681 ; 20682 ; 20671 ; 20672 ;	
Cellular Localization	Nucleus .		
Tissue specificity	Brain,Spleen,		
Function	Function:May play a role in central nervous system, limb and facial development. May be involved in male sex determination. Binds the consensus motif 5'-[AT][AT]CAA[AT]G-3',similarity:Contains 1 HMG box DNA-binding domain.,		

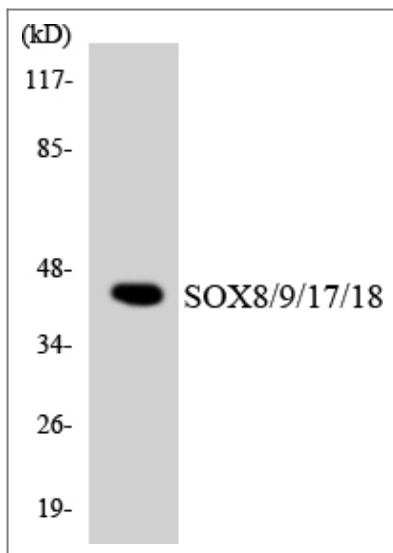
Validation Data



Immunohistochemistry analysis of paraffin-embedded human brain tissue, using SOX8/9/17/18 Antibody. The picture on the right is blocked with the synthesized peptide.



Western blot analysis of lysates from COS7 cells, treated with serum 10% 30', using SOX8/9/17/18 Antibody. The lane on the right is blocked with the synthesized peptide.



Western blot analysis of the lysates from HeLa cells using SOX8/9/17/18 antibody.

Contact information

Orders: order@immunoway.com
Support: tech@immunoway.com
Telephone: 877-594-3616 (Toll Free), 408-747-0185
Website: <http://www.immunoway.com>
Address: 2200 Ringwood Ave San Jose, CA 95131 USA



Please scan the QR code to access additional product information:
Sox-8/9/17/18
Rabbit pAb

For Research Use Only. Not for Use in Diagnostic Procedures.

[Antibody](#) | [ELISA Kits](#) | [Protein](#) | [Reagents](#)