

## Sox-12 Rabbit pAb

CatalogNo: YT4368

### Key Features

#### Host Species

- Rabbit

#### Reactivity

- Human, Mouse

#### Applications

- IHC, IF, ELISA

#### MW

- 34kD (Calculated)

#### Isotype

- IgG

### Recommended Dilution Ratios

IHC 1:100-1:300

ELISA 1:20000

IF 1:50-200

### Storage

**Storage\*** -15°C to -25°C/1 year (Do not lower than -25°C)

**Formulation** Liquid in PBS containing 50% glycerol, 0.5% BSA and 0.02% sodium azide.

### Basic Information

**Clonality** Polyclonal

### Immunogen Information

**Immunogen** The antiserum was produced against synthesized peptide derived from human SOX12. AA range: 71-120

**Specificity** Sox-12 Polyclonal Antibody detects endogenous levels of Sox-12 protein.

### Target Information

**Gene name** SOX12

**Protein Name** Transcription factor SOX-12

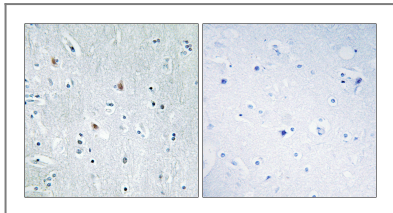
Organism	Gene ID	UniProt ID
Human	<a href="#">6666</a> ;	<a href="#">O15370</a> ;
Mouse	<a href="#">20667</a> ;	<a href="#">Q04890</a> ;

**Cellular Localization** Nucleus .

**Tissue specificity** Expressed most abundantly in the CNS (PubMed:9215677). Expressed in the heart, pancreas, thymus, testis and ovary (PubMed:9215677). Weakly expressed in brain, placenta, lung, liver, skeletal muscle, kidney, spleen, prostate, small intestine, colon, and peripheral blood lymphocytes (PubMed:9215677).

**Function** Function: Binds to the sequence 5'-AACAAAT-3'. similarity: Contains 1 HMG box DNA-binding domain. tissue specificity: Expressed most abundantly in the CNS. Also expressed in fetal brain and kidney and adult heart, pancreas, testis and ovary. Other tissues were only weakly positive.

## Validation Data



Immunohistochemistry analysis of paraffin-embedded human brain tissue, using SOX12 Antibody. The picture on the right is blocked with the synthesized peptide.

## Contact information

Orders: [order@immunoway.com](mailto:order@immunoway.com)  
Support: [tech@immunoway.com](mailto:tech@immunoway.com)  
Telephone: 877-594-3616 (Toll Free), 408-747-0185  
Website: <http://www.immunoway.com>  
Address: 2200 Ringwood Ave San Jose, CA 95131 USA



Please scan the QR code to access additional product information:  
**Sox-12 Rabbit pAb**