

Sos 2 Rabbit pAb

CatalogNo: YT4367

Key Features

Host Species

- Rabbit

Reactivity

- Human, Mouse

Applications

- WB, ELISA, IHC

MW

- 150kD (Observed)

Isotype

- IgG

Recommended Dilution Ratios

WB 1:500-2000**IHC 1:50-300****ELISA 1:2000-20000**

Storage

Storage*

-15°C to -25°C/1 year (Do not lower than -25°C)

Formulation

Liquid in PBS containing 50% glycerol, 0.5% BSA and 0.02% sodium azide.

Basic Information

Clonality

Polyclonal

Immunogen Information

Immunogen

The antiserum was produced against synthesized peptide derived from human SOS2. AA range: 631-680

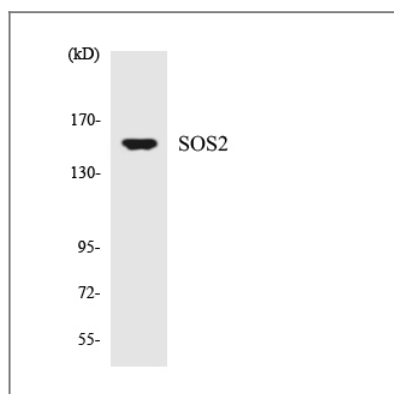
Specificity

Sos 2 Polyclonal Antibody detects endogenous levels of Sos 2 protein.

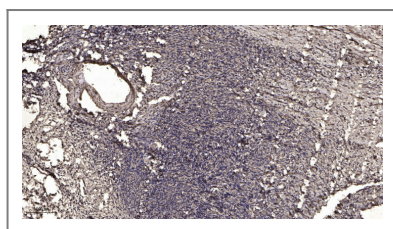
Target Information

Gene name	SOS2		
Protein Name	Son of sevenless homolog 2		
	Organism	Gene ID	UniProt ID
	Human	6655;	Q07890;
	Mouse		Q02384;
Cellular Localization	intracellular,cytosol,		
Tissue specificity	Brain,Placenta,		
Function	Function:Promotes the exchange of Ras-bound GDP by GTP.,online information:Son of sevenless entry,similarity:Contains 1 DH (DBL-homology) domain.,similarity:Contains 1 N-terminal Ras-GEF domain.,similarity:Contains 1 PH domain.,similarity:Contains 1 Ras-GEF domain.,		

Validation Data



Western blot analysis of the lysates from HT-29 cells using SOS2 antibody.



Immunohistochemical analysis of paraffin-embedded human oophoroma. 1, Antibody was diluted at 1:200(4° overnight). 2, Tris-EDTA,pH9.0 was used for antigen retrieval. 3,Secondary antibody was diluted at 1:200(room temperature, 45min).

Contact information

Orders: order@immunoway.com
 Support: tech@immunoway.com
 Telephone: 877-594-3616 (Toll Free), 408-747-0185
 Website: <http://www.immunoway.com>
 Address: 2200 Ringwood Ave San Jose, CA 95131 USA



Please scan the QR code to access additional product information:
Sos 2 Rabbit pAb

