

SNX4 Rabbit pAb

CatalogNo: YT4360

Key Features

Host Species

- Rabbit

Reactivity

- Human, Mouse, Rat

Applications

- WB, IHC

MW

- 60kD (Observed)

Isotype

- IgG

Recommended Dilution Ratios

WB 1:500-2000

IHC 1:50-300

Storage

Storage* -15°C to -25°C/1 year (Do not lower than -25°C)

Formulation Liquid in PBS containing 50% glycerol, 0.5% BSA and 0.02% sodium azide.

Basic Information

Clonality Polyclonal

Immunogen Information

Immunogen The antiserum was produced against synthesized peptide derived from human SNX4. AA range: 191-240

Specificity SNX4 Polyclonal Antibody detects endogenous levels of SNX4 protein.

Target Information

Gene name SNX4

Protein Name Sorting nexin-4

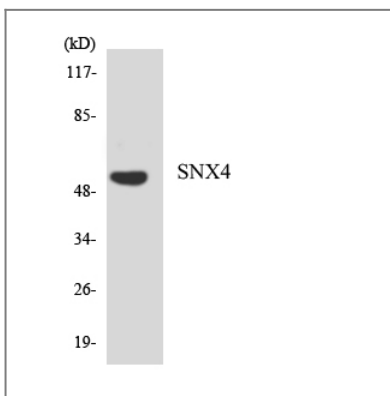
Organism	Gene ID	UniProt ID
Human	8723;	O95219;
Mouse	69150;	Q91YJ2;

Cellular Localization Early endosome membrane ; Peripheral membrane protein ; Cytoplasmic side . Also detected on a juxtannuclear endocytic recycling compartment (ERC). .

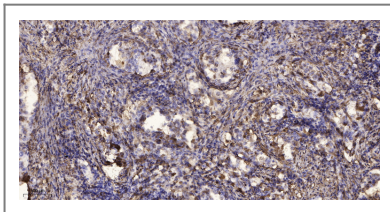
Tissue specificity Liver,Skin,

Function Function:May be involved in several stages of intracellular trafficking.,similarity:Belongs to the sorting nexin family.,similarity:Contains 1 PX (phox homology) domain.,

Validation Data



Western blot analysis of the lysates from HeLa cells using SNX4 antibody.



Immunohistochemical analysis of paraffin-embedded human Squamous cell carcinoma of lung. 1, Antibody was diluted at 1:200(4° overnight). 2, Tris-EDTA,pH9.0 was used for antigen retrieval. 3,Secondary antibody was diluted at 1:200(room temperature, 45min).

Contact information

Orders: order@immunoway.com
Support: tech@immunoway.com
Telephone: 877-594-3616 (Toll Free), 408-747-0185
Website: http://www.immunoway.com
Address: 2200 Ringwood Ave San Jose, CA 95131 USA



Please scan the QR code to access additional product information:
SNX4 Rabbit pAb

