

SNX1 Rabbit pAb

CatalogNo: YT4358

Key Features

Host Species

- Rabbit

Reactivity

- Human, Mouse, Rat

Applications

- WB, ELISA, IHC

MW

- 60kD (Observed)

Isotype

- IgG

Recommended Dilution Ratios

WB 1:500-2000

IHC 1:50-300

ELISA 1:2000-20000

Storage

Storage*

-15°C to -25°C/1 year (Do not lower than -25°C)

Formulation

Liquid in PBS containing 50% glycerol, 0.5% BSA and 0.02% sodium azide.

Basic Information

Clonality

Polyclonal

Immunogen Information

Immunogen

Synthesized peptide derived from the Internal region of human SNX1.

Specificity

SNX1 Polyclonal Antibody detects endogenous levels of SNX1 protein.

Target Information

Gene name

SNX1

Protein Name

Sorting nexin-1

Organism	Gene ID	UniProt ID
Human	6642 ;	Q13596 ;
Mouse	56440 ;	Q9WV80 ;
Rat	84471 ;	Q99N27 ;

Cellular Localization

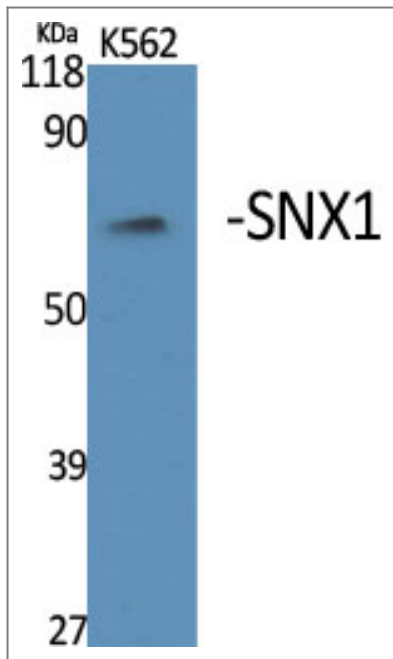
Endosome membrane ; Peripheral membrane protein; Cytoplasmic side. Golgi apparatus, trans-Golgi network membrane ; Peripheral membrane protein ; Cytoplasmic side . Early endosome membrane; Peripheral membrane protein; Cytoplasmic side. Cell projection, lamellipodium . Enriched on tubular elements of the early endosome membrane. Binds preferentially to highly curved membranes enriched in phosphatidylinositol 3-phosphate (PtdIns(3P)) or phosphatidylinositol 3,5-bisphosphate (PtdIns(3,5)P2) (PubMed:15498486). Colocalized with SORT1 to tubular endosomal membrane structures called endosome-to-TGN transport carriers (ETCs) which are budding from early endosome vacuoles just before maturing into late endosome vacuoles (PubMed:18088323). Colocalizes with DNAJC13 and Shiginella dysenteria toxin stxB on early endosomes (PubMed:19874558). Colocalized with F-actin at the leading edge of lamellipodia in a KALRN-dependent manner (PubMed:20604901). .

Tissue specificity Brain,Coronary artery,Liver,Muscle,Testis,

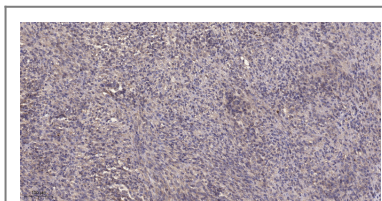
Function

Function:May be involved in several stages of intracellular trafficking. Plays a role in targeting ligand-activated EGFR to the lysosomes for degradation after endocytosis from the cell surface and release from the Golgi. Component of the retromer complex, a complex required to retrieve lysosomal enzyme receptors (IGF2R and M6PR) from endosomes to the trans-Golgi network. Interacts with PtdIns(3,4,5)P3 and, with weaker affinity, with PtdIns(3,5)P2.,similarity:Belongs to the sorting nexin family.,similarity:Contains 1 PX (phox homology) domain.,subunit:Self-assembles into a complex of approximately 300 kDa (By similarity). Interacts with HGS (By similarity). Component of the retromer complex composed of VPS26 (VPS26A or VPS26B), VPS29, VPS35, SNX1 and SNX2.,

| Validation Data



Western Blot analysis of various cells using SNX1 Polyclonal Antibody



Immunohistochemical analysis of paraffin-embedded human Colon cancer. 1, Antibody was diluted at 1:200(4° overnight). 2, Tris-EDTA,pH9.0 was used for antigen retrieval. 3,Secondary antibody was diluted at 1:200(room temperature, 45min).

Contact information

Orders: order@immunoway.com
 Support: tech@immunoway.com
 Telephone: 877-594-3616 (Toll Free), 408-747-0185
 Website: <http://www.immunoway.com>
 Address: 2200 Ringwood Ave San Jose, CA 95131 USA



Please scan the QR code to access additional product information:
SNX1 Rabbit pAb

For Research Use Only. Not for Use in Diagnostic Procedures.

[Antibody](#) | [ELISA Kits](#) | [Protein](#) | [Reagents](#)