

SNAT2 Rabbit pAb

CatalogNo: YT4354

| Key Features

Host Species

- Rabbit

Reactivity

- Human, Mouse, Rat

Applications

- WB, ELISA, IHC

MW

- 50kD (Observed)

Isotype

- IgG

| Recommended Dilution Ratios

WB 1:500-2000

IHC 1:50-300

ELISA 1:2000-20000

| Storage

Storage* -15°C to -25°C/1 year (Do not lower than -25°C)

Formulation Liquid in PBS containing 50% glycerol, 0.5% BSA and 0.02% sodium azide.

| Basic Information

Clonality Polyclonal

| Immunogen Information

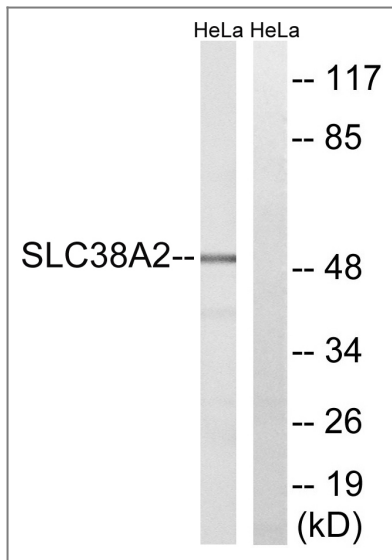
Immunogen The antiserum was produced against synthesized peptide derived from human SLC38A2. AA range:151-200

Specificity SNAT2 Polyclonal Antibody detects endogenous levels of SNAT2 protein.

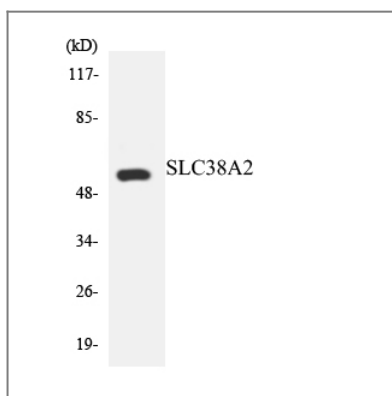
| Target Information

Gene name	SLC38A2		
Protein Name	Sodium-coupled neutral amino acid transporter 2		
	Organism	Gene ID	UniProt ID
	Human	54407 ;	Q96QD8 ;
	Mouse		Q8CFE6 ;
Cellular Localization	Cell membrane ; Multi-pass membrane protein . Insulin promotes recruitment to the plasma membrane from a pool localized in the trans-Golgi network or endosomes (By similarity). Enriched in the somatodendritic compartment of neurons, it is also detected at the axonal shaft but excluded from the nerve terminal. .		
Tissue specificity	Ubiquitously expressed. Widely expressed in the central nervous system with higher concentrations in caudal regions. Expressed by glutamatergic and GABAergic neurons together with astrocytes and other non-neuronal cells in the cerebral cortex (at protein level).		
Function	enzyme regulation:Inhibited by N-methyl-D-glucamine and probably choline.,Function:Functions as a sodium-dependent amino acid transporter. Mediates the saturable, pH-sensitive and electrogenic cotransport of neutral amino acids and sodium ions with a stoichiometry of 1:1. May function in the transport of amino acids at the blood-brain barrier and in the supply of maternal nutrients to the fetus through the placenta.,induction:Up-regulated upon hypertonic conditions and amino acid deprivation.,miscellaneous:Depletion of SCL38A2 by siRNA prevents the recovery of cells from hypertonic stress.,PTM:Polyubiquitination by NEDD4L regulates the degradation and the activity of SLC38A2.,similarity:Belongs to the amino acid/polyamine transporter 2 family.,subcellular location:Insulin promotes recruitment to the plasma membrane from a pool localized in the trans-Golgi network or endosomes (By similarity). Enriched in the somatodendritic compartment of neurons, it is also detected at the axonal shaft but excluded from the nerve terminal.,tissue specificity:Ubiquitously expressed. Widely expressed in the central nervous system with higher concentrations in caudal regions. Expressed by glutamatergic and GABAergic neurons together with astrocytes and other non-neuronal cells in the cerebral cortex (at protein level).,		

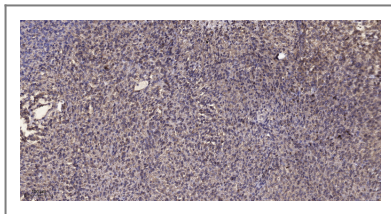
| Validation Data



Western blot analysis of lysates from HeLa cells, using SLC38A2 Antibody. The lane on the right is blocked with the synthesized peptide.



Western blot analysis of the lysates from HeLa cells using SLC38A2 antibody.



Immunohistochemical analysis of paraffin-embedded human Colon cancer. 1, Antibody was diluted at 1:200(4° overnight). 2, Tris-EDTA,pH9.0 was used for antigen retrieval. 3,Secondary antibody was diluted at 1:200(room temperature, 45min).

Contact information

Orders: order@immunoway.com
 Support: tech@immunoway.com
 Telephone: 877-594-3616 (Toll Free), 408-747-0185
 Website: <http://www.immunoway.com>
 Address: 2200 Ringwood Ave San Jose, CA 95131 USA



Please scan the QR code to access additional product information:
SNAT2 Rabbit pAb