

SNAI 1 Rabbit pAb

CatalogNo: YT4351

Orthogonal Validated Comparable Abs 

Key Features

Host Species

- Rabbit

Reactivity

- Human, Mouse, Monkey

Applications

- WB, IP, IHC, IF, ELISA

MW

- 29kD (Observed)

Isotype

- IgG

Recommended Dilution Ratios

WB 1:500-1:2000**IHC 1:100-1:300****IF 1:200-1:1000****ELISA 1:5000****Not yet tested in other applications.**

Storage

Storage* -15°C to -25°C/1 year(Do not lower than -25°C)**Formulation** Liquid in PBS containing 50% glycerol, 0.5% BSA and 0.02% sodium azide.

Basic Information

Clonality Polyclonal

Immunogen Information

Immunogen The antiserum was produced against synthesized peptide derived from human SNAI1. AA range:215-264**Specificity** SNAI 1 Polyclonal Antibody detects endogenous levels of SNAI 1 protein.

Target Information

Gene name SNAI1

Protein Name Zinc finger protein SNAI1(snail)

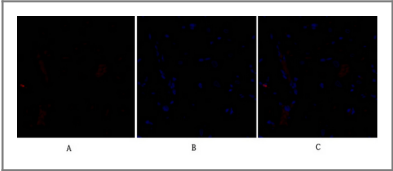
Organism	Gene ID	UniProt ID
Human	6615 ;	O95863 ;
Mouse	20613 ;	Q02085 ;

Cellular Localization Nucleus . Cytoplasm . Once phosphorylated (probably on Ser-107, Ser-111, Ser-115 and Ser-119) it is exported from the nucleus to the cytoplasm where subsequent phosphorylation of the destruction motif and ubiquitination involving BTRC occurs. .

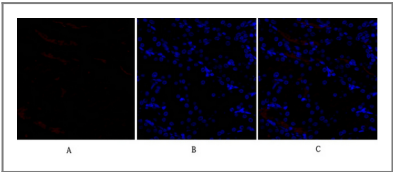
Tissue specificity Expressed in a variety of tissues with the highest expression in kidney. Expressed in mesenchymal and epithelial cell lines.

Function Function:Seems to be involved in embryonic mesoderm formation. Binds to 3 E-boxes of the E-cadherin gene promoter and represses its transcription.,similarity:Belongs to the snail C2H2-type zinc-finger protein family.,similarity:Contains 4 C2H2-type zinc fingers.,tissue specificity:Expressed in a variety of tissues with the highest expression in kidney.,

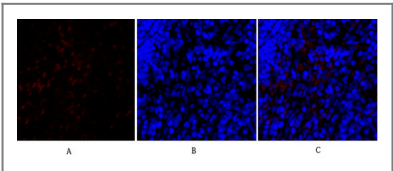
Validation Data



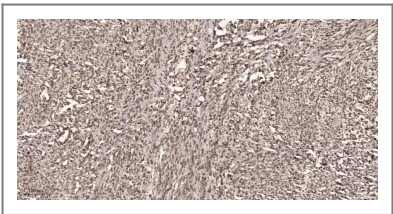
Immunofluorescence analysis of rat-heart tissue. 1,SNAI 1 Polyclonal Antibody(red) was diluted at 1:200(4°C,overnight). 2, Cy3 labeled Secondary antibody was diluted at 1:300(room temperature, 50min).3, Picture B: DAPI(blue) 10min. Picture A:Target. Picture B: DAPI. Picture C: merge of A+B



Immunofluorescence analysis of rat-kidney tissue. 1,SNAI 1 Polyclonal Antibody(red) was diluted at 1:200(4°C,overnight). 2, Cy3 labeled Secondary antibody was diluted at 1:300(room temperature, 50min).3, Picture B: DAPI(blue) 10min. Picture A:Target. Picture B: DAPI. Picture C: merge of A+B



Immunofluorescence analysis of rat-spleen tissue. 1,SNAI 1 Polyclonal Antibody(red) was diluted at 1:200(4°C,overnight). 2, Cy3 labeled Secondary antibody was diluted at 1:300(room temperature, 50min).3, Picture B: DAPI(blue) 10min. Picture A:Target. Picture B: DAPI. Picture C: merge of A+B



Immunohistochemical analysis of paraffin-embedded human small intestinal carcinoma tissue. 1,primary Antibody was diluted at 1:200(4° overnight). 2, Sodium citrate pH 6.0 was used for antigen retrieval(>98°C,20min). 3,Secondary antibody was diluted at 1:200

| Contact information

Orders: order@immunoway.com
Support: tech@immunoway.com
Telephone: 877-594-3616 (Toll Free), 408-747-0185
Website: <http://www.immunoway.com>
Address: 2200 Ringwood Ave San Jose, CA 95131 USA



Please scan the QR code
to access additional
product information:
SNAI 1 Rabbit pAb

For Research Use Only. Not for Use in Diagnostic Procedures.

[Antibody](#) | [ELISA Kits](#) | [Protein](#) | [Reagents](#)