

SMIF Rabbit pAb

CatalogNo: YT4343

Key Features

Host Species

- Rabbit

Reactivity

- Human, Mouse

Applications

- WB, IHC, IF, ELISA

MW

- 75kD (Observed)

Isotype

- IgG

Recommended Dilution Ratios

WB 1:500-1:2000

IHC 1:100-1:300

ELISA 1:20000

IF 1:50-200

Storage

Storage*

-15°C to -25°C/1 year (Do not lower than -25°C)

Formulation

Liquid in PBS containing 50% glycerol, 0.5% BSA and 0.02% sodium azide.

Basic Information

Clonality

Polyclonal

Immunogen Information

Immunogen

The antiserum was produced against synthesized peptide derived from human DCP1A. AA range: 111-160

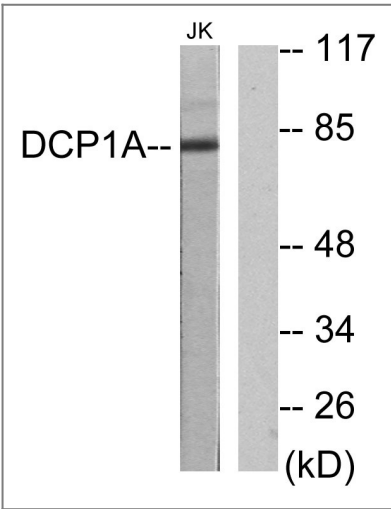
Specificity

SMIF Polyclonal Antibody detects endogenous levels of SMIF protein.

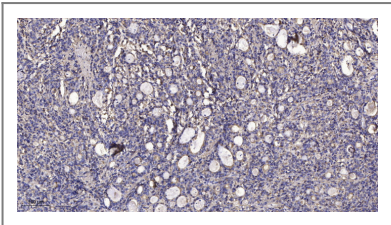
Target Information

Gene name	DCP1A		
Protein Name	mRNA-decapping enzyme 1A		
	Organism	Gene ID	UniProt ID
	Human	55802 ;	Q9NPI6 ;
	Mouse	75901 ;	Q91YD3 ;
Cellular Localization	Cytoplasm, P-body . Nucleus . Co-localizes with NANOS3 in the processing bodies (By similarity). Predominantly cytoplasmic, in processing bodies (PB) (PubMed:16364915). Nuclear, after TGFB1 treatment. Translocation to the nucleus depends on interaction with SMAD4 (PubMed:11836524). .		
Tissue specificity	Detected in heart, brain, placenta, lung, skeletal muscle, liver, kidney and pancreas.		
Function	Function:Necessary for the degradation of mRNAs, both in normal mRNA turnover and in nonsense-mediated mRNA decay. Removes the 7-methyl guanine cap structure from mRNA molecules, yielding a 5'-phosphorylated mRNA fragment and 7m-GDP. Contributes to the transactivation of target genes after stimulation by TGFB1.,similarity:Belongs to the DCP1 family.,subcellular location:Predominantly cytoplasmic, in processing bodies (PB). Nuclear, after TGFB1 treatment. Translocation to the nucleus depends on interaction with SMAD4.,subunit:Forms a complex with EDC3, DCP2, DDX6 and EDC4/HEDLS, within this complex directly interacts with EDC3. Binds DCP1B, UPF1 and SMAD4. Part of a cytoplasmic complex containing proteins involved in mRNA decay, including XRN1 and LSM1. Interacts with PNRC2.,tissue specificity:Detected in heart, brain, placenta, lung, skeletal muscle, liver, kidney and pancreas.,		

Validation Data



Western blot analysis of lysates from Jurkat cells, using DCP1A Antibody. The lane on the right is blocked with the synthesized peptide.



Immunohistochemical analysis of paraffin-embedded human Gastric adenocarcinoma. 1, Antibody was diluted at 1:200(4° overnight). 2, Tris-EDTA,pH9.0 was used for antigen retrieval. 3,Secondary antibody was diluted at 1:200(room temperature, 45min).

| Contact information

Orders: order@immunoway.com
Support: tech@immunoway.com
Telephone: 877-594-3616 (Toll Free), 408-747-0185
Website: <http://www.immunoway.com>
Address: 2200 Ringwood Ave San Jose, CA 95131 USA



Please scan the QR code
to access additional
product information:
SMIF Rabbit pAb

For Research Use Only. Not for Use in Diagnostic Procedures.

[Antibody](#) | [ELISA Kits](#) | [Protein](#) | [Reagents](#)