

SLU7 Rabbit pAb

CatalogNo: YT4322

Key Features

Host Species

- Rabbit

Reactivity

- Human, Mouse, Rat

Applications

- WB, IHC

MW

- 65kD (Observed)

Isotype

- IgG

Recommended Dilution Ratios

WB 1:500-2000

IHC 1:50-300

Storage

Storage* -15°C to -25°C/1 year (Do not lower than -25°C)

Formulation Liquid in PBS containing 50% glycerol, 0.5% BSA and 0.02% sodium azide.

Basic Information

Clonality Polyclonal

Immunogen Information

Immunogen The antiserum was produced against synthesized peptide derived from human SLU7. AA range: 113-162

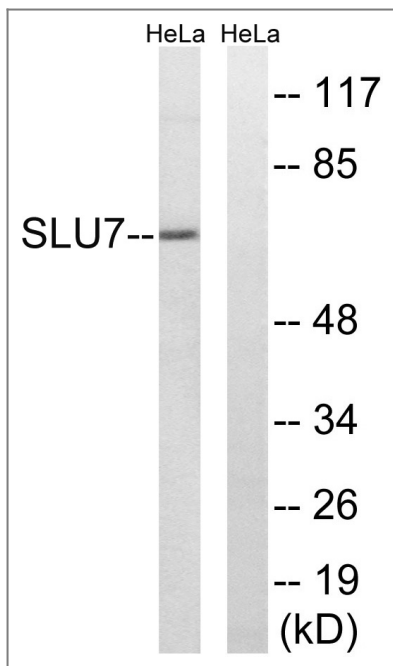
Specificity SLU7 Polyclonal Antibody detects endogenous levels of SLU7 protein.

Target Information

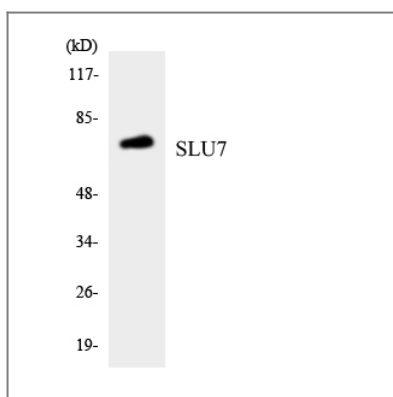
Gene name SLU7

Protein Name	Pre-mRNA-splicing factor SLU7		
	Organism	Gene ID	UniProt ID
	Human	10569;	O95391;
	Mouse	193116;	Q8BHJ9;
	Rat	303057;	Q80ZG5;
Cellular Localization	Nucleus . Nucleus speckle . Cytoplasm . Predominantly nuclear. Shuttling between the nucleus and the cytoplasm is regulated by the CCHC-type zinc finger. Upon UV-C stress stimulus, the nuclear concentration of the protein decreases, affecting alternative splicing. Translocates from the nucleus to the cytoplasm after heat shock cell treatment. Accumulates in cytoplasmic vesicle-like organelles after heat shock treatment, which may represent stress granules. .		
Tissue specificity	Colon,Epithelium,Eye,		
Function	Domain:The CCHC-type zinc finger is required to retain the protein within the nucleus and prevent its shuttle back to the cytoplasm via the CRM1 pathway.,Function:Participates in the second catalytic step of pre-mRNA splicing, when the free hydroxyl group of exon I attacks the 3'-splice site to generate spliced mRNA and the excised lariat intron. Required for holding exon 1 properly in the spliceosome and for correct AG identification when more than one possible AG exists in 3'-splicing site region. May be involved in the activation of proximal AG. Probably also involved in alternative splicing regulation.,similarity:Belongs to the SLU7 family.,similarity:Contains 1 CCHC-type zinc finger.,subcellular location:Predominantly nuclear. Shuttling between the nucleus and the cytoplasm is regulated by the CCHC-type zinc finger. Upon UV-C stress stimulus, the nuclear concentration of the protein decreases, affecting alternative splicing.,subunit:Component of late spliceosomal complexes. Associates with the spliceosome prior to recognition of the 3'-splice site for step II, probably during catalysis of step I.,		

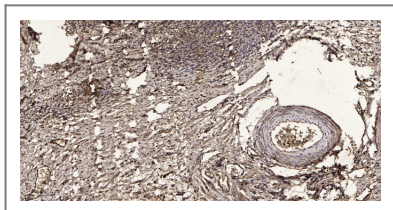
| Validation Data



Western blot analysis of lysates from HeLa cells, using SLU7 Antibody. The lane on the right is blocked with the synthesized peptide.



Western blot analysis of the lysates from HepG2 cells using SLU7 antibody.



Immunohistochemical analysis of paraffin-embedded human oophoroma. 1, Antibody was diluted at 1:200(4° overnight). 2, Tris-EDTA,pH9.0 was used for antigen retrieval. 3,Secondary antibody was diluted at 1:200(room temperature, 45min).

Contact information

Orders: order@immunoway.com
 Support: tech@immunoway.com
 Telephone: 877-594-3616 (Toll Free), 408-747-0185
 Website: <http://www.immunoway.com>
 Address: 2200 Ringwood Ave San Jose, CA 95131 USA



Please scan the QR code to access additional product information:
SLU7 Rabbit pAb