

Skp2 p45 Rabbit pAb

CatalogNo: YT4311

Key Features

Host Species

- Rabbit

Reactivity

- Human, Mouse

Applications

- WB, IHC, IF, ELISA

MW

- 47kD (Observed)

Isotype

- IgG

Storage

Storage* -15°C to -25°C/1 year (Do not lower than -25°C)

Formulation Liquid in PBS containing 50% glycerol, 0.5% BSA and 0.02% sodium azide.

Recommended Dilution Ratios

WB 1:500-1:2000

IHC 1:100-1:300

IF 1:200-1:1000

ELISA 1:20000

Not yet tested in other applications.

Basic Information

Clonality Polyclonal

Immunogen Information

Immunogen The antiserum was produced against synthesized peptide derived from human SKP2/p45. AA range:366-415

Specificity Skp2 p45 Polyclonal Antibody detects endogenous levels of Skp2 p45 protein.

Target Information

Gene name SKP2

Protein Name S-phase kinase-associated protein 2

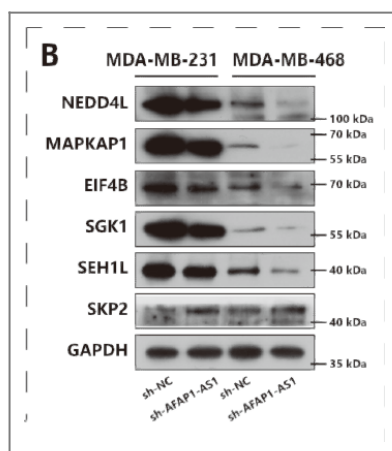
Organism	Gene ID	UniProt ID
Human	6502 ;	Q13309 ;
Mouse		Q9Z0Z3 ;

Cellular Localization Cytoplasm . Nucleus .

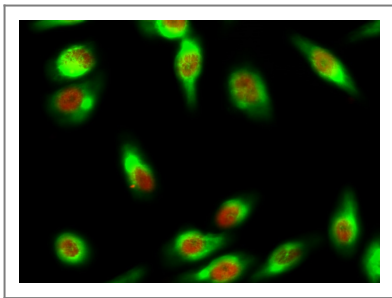
Tissue specificity Epithelium,Liver,Placenta,Prostatic carcinoma,

Function Function:Substrate recognition component of a SCF (SKP1-CUL1-F-box protein) E3 ubiquitin-protein ligase complex which mediates the ubiquitination and subsequent proteasomal degradation of target proteins involved in cell cycle progression, signal transduction and transcription. Specifically recognizes phosphorylated CDKN1B/p27kip and is involved in regulation of G1/S transition. Degradation of CDKN1B/p27kip also requires CKS1. Recognizes target proteins ORC1L, CDT1, RBL2, MLL, CDK9, RAG2, FOXO1A, UBP43, and probably MYC, TOB1 and TAL1. Degradation of TAL1 also requires STUB1. Recognizes CDKN1A in association with CCNE1 or CCNE2 and CDK2.,pathway:Protein modification; protein ubiquitination.,similarity:Contains 1 F-box domain.,similarity:Contains 8 LRR (leucine-rich) repeats.,subunit:Part of the SCF(SKP2) complex consisting of CUL1, RBX1, SKP1 and SKP2. Interacts directly with CUL1 and SKP1. Interacts with CKS1. Interacts with the cyclin A-CDK2 complex. Interacts with ORC1L, phosphorylated CDT1, phosphorylated RBL2, ELF4, phosphorylated RAG2, FOXO1A, UBP43, MYC, TOB1, TAL1 and MLL.,

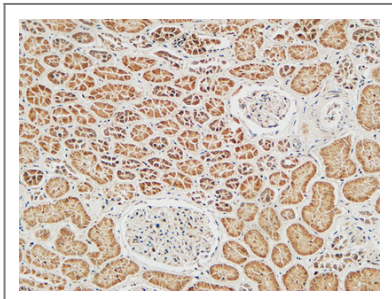
Validation Data



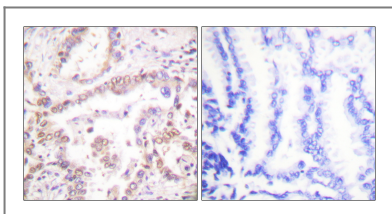
SP1-Induced Upregulation of LncRNA AFAP1-AS1 Promotes Tumor Progression in Triple-Negative Breast Cancer by Regulating mTOR Pathway. INTERNATIONAL JOURNAL OF MOLECULAR SCIENCES Yidong Zhou WB Human 1:500 MDA-231 cell,MDA-MB-468 cell



Immunofluorescence analysis of HeLa cell. 1, Skp2 p45 Polyclonal Antibody (red) was diluted at 1:200 (4° overnight). CYCS Monoclonal Antibody (4B10) (green) was diluted at 1:200 (4° overnight). 2, Goat Anti Rabbit Alexa Fluor 594 Catalog: RS3611 was diluted at 1:1000 (room temperature, 50min). Goat Anti Mouse Alexa Fluor 488 Catalog: RS3208 was diluted at 1:1000 (room temperature, 50min).



Immunohistochemical analysis of paraffin-embedded Human Right kidney. 1, Antibody was diluted at 1:100 (4° overnight). 2, High-pressure and temperature EDTA, pH 8.0 was used for antigen retrieval. 3, Secondary antibody was diluted at 1:200 (room temperature, 30min).



Immunohistochemistry analysis of paraffin-embedded human lung carcinoma tissue, using SKP2/p45 Antibody. The picture on the right is blocked with the synthesized peptide.

Contact information

Orders: order@immunoway.com
Support: tech@immunoway.com
Telephone: 877-594-3616 (Toll Free), 408-747-0185
Website: <http://www.immunoway.com>
Address: 2200 Ringwood Ave San Jose, CA 95131 USA



Please scan the QR code to access additional product information:
Skp2 p45 Rabbit pAb

For Research Use Only. Not for Use in Diagnostic Procedures.

[Antibody](#) | [ELISA Kits](#) | [Protein](#) | [Reagents](#)