

SKI-1 Rabbit pAb

CatalogNo: YT4309

Key Features

Host Species

- Rabbit

Reactivity

- Human, Mouse, Rat

Applications

- WB, ELISA, IHC

MW

- 130kD (Observed)

Isotype

- IgG

Recommended Dilution Ratios

WB 1:500-2000

IHC 1:50-300

ELISA 1:2000-20000

Storage

Storage* -15°C to -25°C/1 year (Do not lower than -25°C)

Formulation Liquid in PBS containing 50% glycerol, 0.5% BSA and 0.02% sodium azide.

Basic Information

Clonality Polyclonal

Immunogen Information

Immunogen Synthesized peptide derived from SKI-1 . at AA range: 180-260

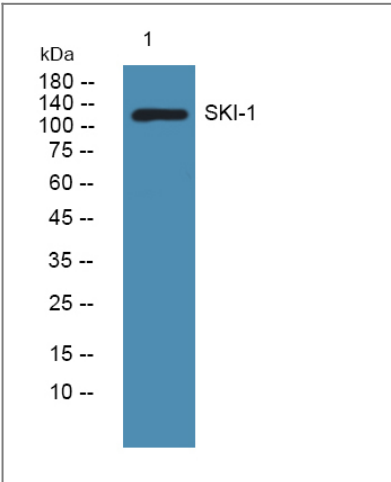
Specificity SKI-1 Polyclonal Antibody detects endogenous levels of SKI-1 protein.

Target Information

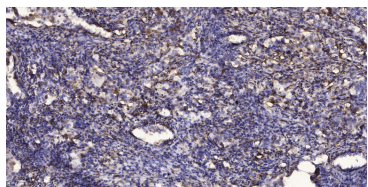
Gene name MBTPS1

| | | | |
|------------------------------|--|------------------------|-------------------------|
| Protein Name | Membrane-bound transcription factor site-1 protease | | |
| | Organism | Gene ID | UniProt ID |
| | Human | 8720; | Q14703; |
| | Mouse | 56453; | Q9WTZ2; |
| | Rat | 89842; | Q9WTZ3; |
| Cellular Localization | Endoplasmic reticulum membrane ; Single-pass type I membrane protein . Golgi apparatus membrane ; Single-pass type I membrane protein . May sort to other organelles, including lysosomal and/or endosomal compartments. . | | |
| Tissue specificity | Widely expressed. | | |
| Function | Catalytic activity:Processes precursors containing basic and hydrophobic/aliphatic residues at P4 and P2, respectively, with a relatively relaxed acceptance of amino acids at P1 and P3.,cofactor:Calcium.,enzyme regulation:Inhibited by divalent copper and zinc ions, but not by nickel or cobalt. Inhibited by its prosegment, but not smaller fragments thereof.,Function:Catalyzes the first step in the proteolytic activation of the sterol regulatory element-binding proteins (SREBPs). Other known substrates are BDNF and ATF6. Cleaves after hydrophobic or small residues, provided that Arg or Lys is in position P4. Cleaves known substrates after Arg-Ser-Val-Leu (SERBP-2), Arg-His-Leu-Leu (ATF6), Arg-Gly-Leu-Thr (BDNF) and its own propeptide after Arg-Arg-Leu-Leu.,induction:Down-regulated by sterols.,PTM:The 148 kDa zymogen is processed progressively into two membrane-bound 120 and 106 kDa forms in the endoplasmic reticulum, and late into a secreted 98 kDa form. The propeptide is autocatalytically removed through an intramolecular cleavage after Leu-186. Further cleavage generates 14, 10, and 8kDa intermediates.,similarity:Belongs to the peptidase S8 family.,subcellular location:May sort to other organelles, including lysosomal and/or endosomal compartments.,tissue specificity:Widely expressed., | | |

Validation Data



Western blot analysis of lysates from HCT116 cells, primary antibody was diluted at 1:1000, 4°over night



Immunohistochemical analysis of paraffin-embedded human Squamous cell carcinoma of lung. 1, Antibody was diluted at 1:200(4° overnight). 2, Tris-EDTA,pH9.0 was used for antigen retrieval. 3,Secondary antibody was diluted at 1:200(room temperature, 45min).

| Contact information

Orders: order@immunoway.com
Support: tech@immunoway.com
Telephone: 877-594-3616 (Toll Free), 408-747-0185
Website: <http://www.immunoway.com>
Address: 2200 Ringwood Ave San Jose, CA 95131 USA



Please scan the QR code
to access additional
product information:
SKI-1 Rabbit pAb

For Research Use Only. Not for Use in Diagnostic Procedures.

[Antibody](#) | [ELISA Kits](#) | [Protein](#) | [Reagents](#)