

Sgo2 Rabbit pAb

CatalogNo: YT4276

| Key Features

Host Species

- Rabbit

Reactivity

- Human, Mouse

Applications

- IHC, IF, ELISA

MW

- 145kD (Calculated)

Isotype

- IgG

| Recommended Dilution Ratios

IHC 1:100-1:300

ELISA 1:10000

IF 1:50-200

| Storage

Storage*

-15°C to -25°C/1 year (Do not lower than -25°C)

Formulation

Liquid in PBS containing 50% glycerol, 0.5% BSA and 0.02% sodium azide.

| Basic Information

Clonality

Polyclonal

| Immunogen Information

Immunogen

The antiserum was produced against synthesized peptide derived from human SGOL2. AA range: 681-730

Specificity

Sgo2 Polyclonal Antibody detects endogenous levels of Sgo2 protein.

| Target Information

Gene name SGOL2

Protein Name Shugoshin-like 2

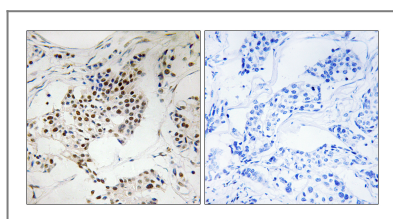
Organism	Gene ID	UniProt ID
Human	151246 ;	Q562F6 ;
Mouse		Q7TSY8 ;

Cellular Localization Nucleus . Chromosome, centromere . Chromosome, centromere, kinetochore . During meiosis I, accumulates at centromeres during diplotene, and colocalizes differentially with the cohesin subunits RAD21 and REC8 at metaphase I centromeres (By similarity). SGO2 and RAD21 change their relative distributions during telophase I when sister-kinetochore association is lost (By similarity). During meiosis II, it shows a striking tension-dependent redistribution within centromeres throughout chromosome congression during prometaphase II, as it does during mitosis (By similarity). In HeLa cells, localizes at centromeres throughout prophase until metaphase and disappears at anaphase (PubMed:17485487). Centromeric localization requires the presence of BUB1 and AUKRB (PubMed:17485487). .

Tissue specificity Epithelium,Lymph,Testis,Uterus,

Function Function:During meiosis, protects centromeric cohesion complexes until metaphase II/anaphase II transition, preventing premature release of meiosis-specific REC8 cohesin complexes from anaphase I centromeres. Is thus essential for an accurate gametogenesis (By similarity). May act by targeting PPP2CA to centromeres, thus leading to cohesin dephosphorylation.,PTM:Phosphorylated upon DNA damage, probably by ATM or ATR.,sequence Caution:Contaminating sequence. Potential poly-A sequence.,similarity:Belongs to the shugoshin family.,subcellular location:In HeLa cells, localizes at centromeres throughout prophase until metaphase and disappears at anaphase.,subunit:Directly interacts with PPP2CA.,

Validation Data



Immunohistochemistry analysis of paraffin-embedded human breast carcinoma, using SGOL2 Antibody. The picture on the right is blocked with the synthesized peptide.

Contact information

Orders: order@immunoway.com
Support: tech@immunoway.com
Telephone: 877-594-3616 (Toll Free), 408-747-0185
Website: <http://www.immunoway.com>
Address: 2200 Ringwood Ave San Jose, CA 95131 USA



Please scan the QR code to access additional product information:
Sgo2 Rabbit pAb

