

SFRS15 Rabbit pAb

CatalogNo: YT4265

Key Features

Host Species

- Rabbit

Reactivity

- Human, Mouse, Rat

Applications

- WB, IHC, IF, ELISA

MW

- 140kD (Observed)

Isotype

- IgG

Recommended Dilution Ratios

WB 1:500-1:2000

IHC 1:100-1:300

ELISA 1:40000

IF 1:50-200

Storage

Storage*

-15°C to -25°C/1 year (Do not lower than -25°C)

Formulation

Liquid in PBS containing 50% glycerol, 0.5% BSA and 0.02% sodium azide.

Basic Information

Clonality

Polyclonal

Immunogen Information

Immunogen

The antiserum was produced against synthesized peptide derived from human SFRS15. AA range: 601-650

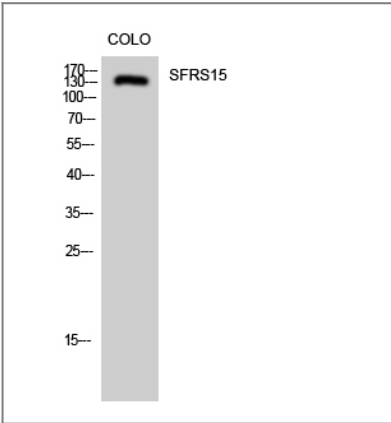
Specificity

SFRS15 Polyclonal Antibody detects endogenous levels of SFRS15 protein.

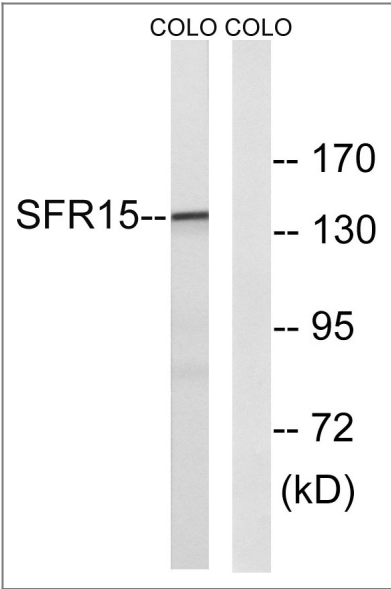
Target Information

Gene name	SCAF4		
Protein Name	Splicing factor arginine/serine-rich 15		
	Organism	Gene ID	UniProt ID
	Human	57466 ;	O95104 ;
	Rat		Q63627 ;
Cellular Localization	Nucleus .		
Tissue specificity	Brain,Epithelium,Melanoma,Pancreas,Testis,Uterus,		
Function	Function:May act to physically and functionally link transcription and pre-mRNA processing.,similarity:Belongs to the splicing factor SR family.,similarity:Contains 1 CID domain.,similarity:Contains 1 RRM (RNA recognition motif) domain.,subunit:Interacts with the repetitive C-terminal domain (CTD) of RNA polymerase II.,		

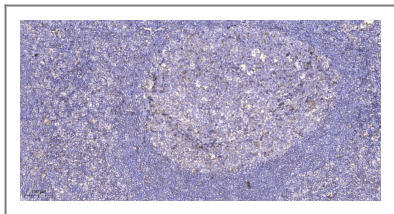
| Validation Data



Western Blot analysis of COLO cells using SFRS15 Polyclonal Antibody diluted at 1:2000 cells nucleus extracted by Minute TM Cytoplasmic and Nuclear Fractionation kit (SC-003,Inventbiotech,MN,USA).



Western blot analysis of lysates from COLO cells, using SFRS15 Antibody. The lane on the right is blocked with the synthesized peptide.



Immunohistochemical analysis of paraffin-embedded human tonsil. 1, Antibody was diluted at 1:200(4° overnight). 2, Tris-EDTA,pH9.0 was used for antigen retrieval. 3,Secondary antibody was diluted at 1:200(room temperature, 45min).

| Contact information

Orders: order@immunoway.com
Support: tech@immunoway.com
Telephone: 877-594-3616 (Toll Free), 408-747-0185
Website: <http://www.immunoway.com>
Address: 2200 Ringwood Ave San Jose, CA 95131 USA



Please scan the QR code to access additional product information:

SFRS15 Rabbit pAb

For Research Use Only. Not for Use in Diagnostic Procedures.

[Antibody](#) | [ELISA Kits](#) | [Protein](#) | [Reagents](#)