

SFRS14 Rabbit pAb

CatalogNo: YT4264

Key Features

Host Species

- Rabbit

Reactivity

- Human, Mouse

Applications

- WB, ELISA, IHC

MW

- 120kD (Observed)

Isotype

- IgG

Storage

Storage* -15°C to -25°C/1 year (Do not lower than -25°C)**Formulation** Liquid in PBS containing 50% glycerol, 0.5% BSA and 0.02% sodium azide.

Recommended Dilution Ratios

WB 1:500-2000**IHC 1:50-300****ELISA 1:2000-20000**

Basic Information

Clonality Polyclonal

Immunogen Information

Immunogen Synthesized peptide derived from SFRS14 . at AA range: 260-340**Specificity** SFRS14 Polyclonal Antibody detects endogenous levels of SFRS14 protein.

Target Information

Gene name SUGP2

Protein Name SURP and G-patch domain-containing protein 2

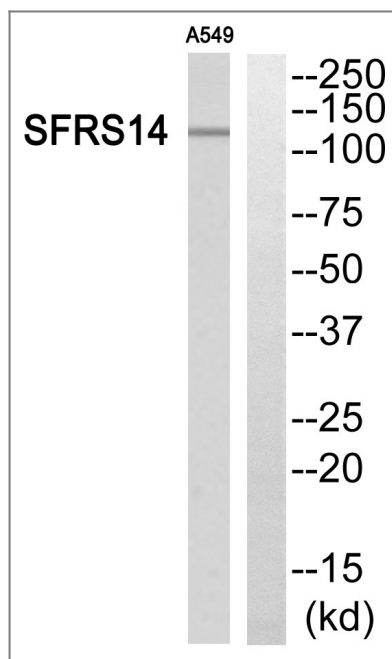
Organism	Gene ID	UniProt ID
Human	10147 ;	Q8IX01 ;
Mouse		Q8CH09 ;

Cellular Localization Nucleus .

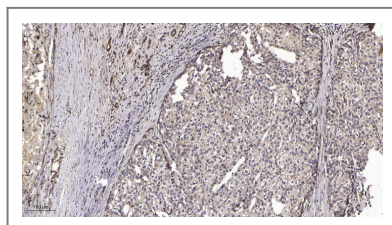
Tissue specificity Detected in adult testis, and in fetal brain and kidney.

Function Function:May play a role in mRNA splicing .,PTM:Phosphorylated upon DNA damage, probably by ATM or ATR.,similarity:Contains 1 G-patch domain.,similarity:Contains 2 SURP motif repeats.,tissue specificity:Detected in adult testis, and in fetal brain and kidney.,

Validation Data



Western blot analysis of SFRS14 Antibody. The lane on the right is blocked with the SFRS14 peptide.



Immunohistochemical analysis of paraffin-embedded human liver cancer. 1, Antibody was diluted at 1:200(4° overnight). 2, Tris-EDTA,pH9.0 was used for antigen retrieval. 3,Secondary antibody was diluted at 1:200(room temperature, 45min).

Contact information

Orders: order@immunoway.com
Support: tech@immunoway.com
Telephone: 877-594-3616 (Toll Free), 408-747-0185
Website: http://www.immunoway.com
Address: 2200 Ringwood Ave San Jose, CA 95131 USA



Please scan the QR code
to access additional
product information:
SFRS14 Rabbit pAb

For Research Use Only. Not for Use in Diagnostic Procedures.

[Antibody](#) | [ELISA Kits](#) | [Protein](#) | [Reagents](#)