

SETMAR Rabbit pAb

CatalogNo: YT4260

Key Features

Host Species

- Rabbit

Reactivity

- Human,Rat,Mouse,

Applications

- IHC,IF,ELISA

MW

- 77kD (Calculated)

Isotype

- IgG

Recommended Dilution Ratios

IHC 1:100-1:300

ELISA 1:40000

IF 1:50-200

Storage

Storage* -15°C to -25°C/1 year(Do not lower than -25°C)

Formulation Liquid in PBS containing 50% glycerol, 0.5% BSA and 0.02% sodium azide.

Basic Information

Clonality Polyclonal

Immunogen Information

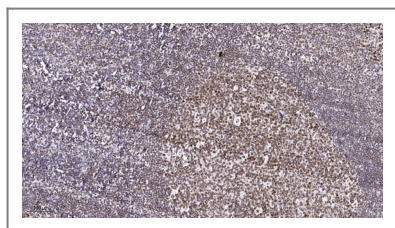
Immunogen The antiserum was produced against synthesized peptide derived from human SETMAR. AA range:350-400

Specificity SETMAR Polyclonal Antibody detects endogenous levels of SETMAR protein.

Target Information

Gene name	SETMAR		
Protein Name	Histone-lysine N-methyltransferase SETMAR		
	Organism	Gene ID	UniProt ID
	Human	6419;	Q53H47;
	Mouse		Q80UJ9;
Cellular Localization	Nucleus . Chromosome . Recruited on damaged DNA at sites of double-strand breaks. .		
Tissue specificity	Widely expressed, with highest expression in placenta and ovary and lowest expression in skeletal muscle.		
Function	<p>Catalytic activity:S-adenosyl-L-methionine + histone L-lysine = S-adenosyl-L-homocysteine + histone N(6)-methyl-L-lysine.,Domain:The mariner transposase Hsmar1 region mediates DNA-binding. It has no transposase activity because the active site contains an Asn in position 610 instead of a Asp residue.,Function:Histone methyltransferase that methylates 'Lys-4' and 'Lys-36' of histone H3, 2 specific tags for epigenetic transcriptional activation. Specifically mediates dimethylation of H3 'Lys-36'. Binds DNA. May play a role in non-homologous end-joining repair.,miscellaneous:The mariner transposase region is only present in primates and appeared 40-58 million years ago, after the insertion of a transposon downstream of a preexisting SET gene, followed by the de novo exonization of previously non-coding sequence and the creation of a new intron.,similarity:Contains 1 post-SET domain.,similarity:Contains 1 pre-SET domain.,similarity:Contains 1 SET domain.,similarity:In the C-terminal section; belongs to the mariner transposase family.,similarity:In the N-terminal section; belongs to the histone-lysine methyltransferase family.,tissue specificity:Widely expressed, with highest expression in placenta and ovary and lowest expression in skeletal muscle.,</p>		

Validation Data



Immunohistochemical analysis of paraffin-embedded human tonsil. 1, Antibody was diluted at 1:200(4° overnight). 2, Tris-EDTA,pH9.0 was used for antigen retrieval. 3,Secondary antibody was diluted at 1:200(room temperature, 45min).

Contact information

Orders: order@immunoway.com
 Support: tech@immunoway.com
 Telephone: 877-594-3616 (Toll Free), 408-747-0185
 Website: <http://www.immunoway.com>
 Address: 2200 Ringwood Ave San Jose, CA 95131 USA



Please scan the QR code to access additional product information:
SETMAR Rabbit pAb

