

## SerpinA6 Rabbit pAb

CatalogNo: YT4259

### Key Features

#### Host Species

- Rabbit

#### Reactivity

- Human, Mouse, Rat

#### Applications

- IHC, IF, ELISA

#### MW

- 45kD (Calculated)

#### Isotype

- IgG

### Recommended Dilution Ratios

IHC 1:100-1:300

ELISA 1:5000

IF 1:50-200

### Storage

**Storage\*** -15°C to -25°C/1 year (Do not lower than -25°C)

**Formulation** Liquid in PBS containing 50% glycerol, 0.5% BSA and 0.02% sodium azide.

### Basic Information

**Clonality** Polyclonal

### Immunogen Information

**Immunogen** Synthesized peptide derived from the Internal region of human SerpinA6.

**Specificity** SerpinA6 Polyclonal Antibody detects endogenous levels of SerpinA6 protein.

### Target Information

**Gene name** SERPINA6

**Protein Name** Corticosteroid-binding globulin

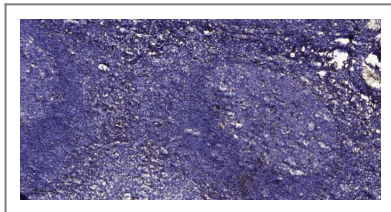
Organism	Gene ID	UniProt ID
Human	<a href="#">866;</a>	<a href="#">P08185;</a>
Mouse		<a href="#">Q06770;</a>

**Cellular Localization** Secreted.

**Tissue specificity** Plasma; synthesized in liver. Has also been identified in a number of glucocorticoid responsive cells.

**Function** Disease:Defects in SERPINA6 are a cause of corticosteroid-binding globulin deficiency (CBG deficiency) [MIM:611489]. CBG deficiency is an extremely rare hereditary disorder characterized by reduced corticosteroid-binding capacity with normal or low plasma corticosteroid-binding globulin concentration, and normal or low basal cortisol levels associated with hypo/hypertension and muscle fatigue.,Function:Major transport protein for glucocorticoids and progestins in the blood of almost all vertebrate species.,online information:Transcortin entry,PTM:Glycosylation in position Asn-260 is needed for steroid binding.,PTM:N-glycosylated; binds 5 oligosaccharide chains.,similarity:Belongs to the serpin family.,tissue specificity:Plasma; synthesized in liver. Has also been identified in a number of glucocorticoid responsive cells.,

## Validation Data



Immunohistochemical analysis of paraffin-embedded human tonsil. 1, Antibody was diluted at 1:200(4° overnight). 2, Tris-EDTA,pH9.0 was used for antigen retrieval. 3,Secondary antibody was diluted at 1:200(room temperature, 30min).

## Contact information

Orders: [order@immunoway.com](mailto:order@immunoway.com)  
Support: [tech@immunoway.com](mailto:tech@immunoway.com)  
Telephone: 877-594-3616 (Toll Free), 408-747-0185  
Website: <http://www.immunoway.com>  
Address: 2200 Ringwood Ave San Jose, CA 95131 USA



Please scan the QR code to access additional product information:  
**SerpinA6 Rabbit pAb**