

Serine racemase Rabbit pAb

CatalogNo: YT4256

Key Features

Host Species

- Rabbit

Reactivity

- Human,Rat,Mouse,

Applications

- IHC,IF,ELISA

MW

- 37kD (Calculated)

Isotype

- IgG

Recommended Dilution Ratios

IHC 1:100-1:300

ELISA 1:5000

IF 1:50-200

Storage

Storage* -15°C to -25°C/1 year(Do not lower than -25°C)

Formulation Liquid in PBS containing 50% glycerol, 0.5% BSA and 0.02% sodium azide.

Basic Information

Clonality Polyclonal

Immunogen Information

Immunogen Synthesized peptide derived from Serine racemase . at AA range: 90-170

Specificity Serine racemase Polyclonal Antibody detects endogenous levels of Serine racemase protein.

Target Information

Gene name SRR

Protein Name Serine racemase

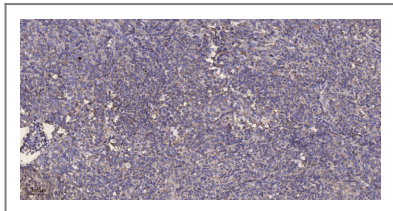
Organism	Gene ID	UniProt ID
Human	63826;	Q9GZT4;
Mouse		Q9QZX7;

Cellular Localization cytoplasm,plasma membrane,neuronal cell body,apical part of cell,

Tissue specificity Brain: expressed at high levels in hippocampus and corpus callosum, intermediate levels in substantia nigra and caudate, and low levels in amygdala, thalamus, and subthalamic nuclei. Expressed in heart, skeletal muscle, kidney and liver.

Function Catalytic activity:L-serine = D-serine.,cofactor:Pyridoxal phosphate.,Function:Catalyzes the synthesis of D-serine from L-serine.,similarity:Belongs to the serine/threonine dehydratase family.,tissue specificity:Brain: expressed at high levels in hippocampus and corpus callosum, intermediate levels in substantia nigra and caudate, and low levels in amygdala, thalamus, and subthalamic nuclei. Expressed in heart, skeletal muscle, kidney and liver.,

| Validation Data



Immunohistochemical analysis of paraffin-embedded human Colon cancer. 1, Antibody was diluted at 1:200(4° overnight). 2, Tris-EDTA,pH9.0 was used for antigen retrieval. 3,Secondary antibody was diluted at 1:200(room temperature, 45min).

| Contact information

Orders: order@immunoway.com
Support: tech@immunoway.com
Telephone: 877-594-3616 (Toll Free), 408-747-0185
Website: <http://www.immunoway.com>
Address: 2200 Ringwood Ave San Jose, CA 95131 USA



Please scan the QR code to access additional product information:
Serine racemase
Rabbit pAb