

## Serinc1 Rabbit pAb

CatalogNo: YT4255

### Key Features

#### Host Species

- Rabbit

#### Reactivity

- Human, Mouse, Rat

#### Applications

- WB, IHC, IF, ELISA

#### MW

- 48kD (Observed)

#### Isotype

- IgG

### Recommended Dilution Ratios

**WB 1:500-1:2000**

**IHC 1:100-1:300**

**IF 1:200-1:1000**

**ELISA 1:20000**

**Not yet tested in other applications.**

### Storage

#### Storage\*

-15°C to -25°C/1 year (Do not lower than -25°C)

#### Formulation

Liquid in PBS containing 50% glycerol, 0.5% BSA and 0.02% sodium azide.

### Basic Information

#### Clonality

Polyclonal

### Immunogen Information

#### Immunogen

The antiserum was produced against synthesized peptide derived from human SERC1. AA range: 381-430

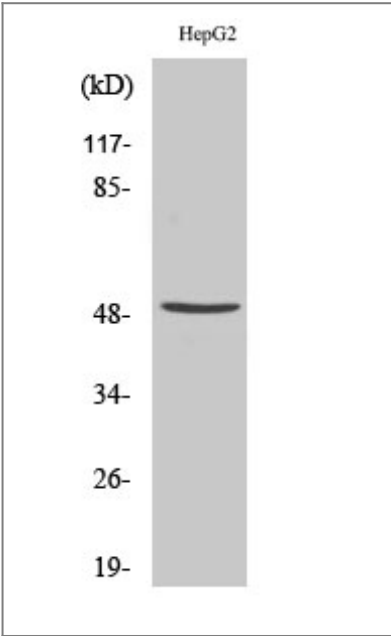
#### Specificity

Serinc1 Polyclonal Antibody detects endogenous levels of Serinc1 protein.

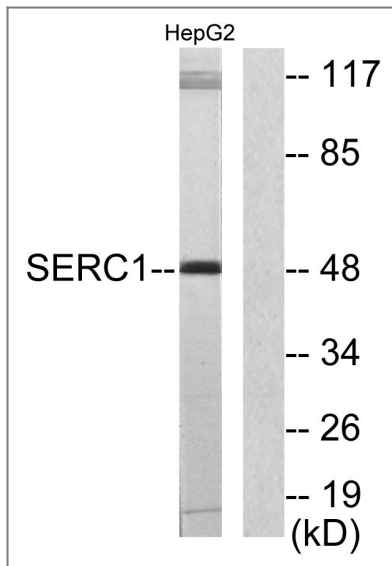
## Target Information

Gene name	SERINC1		
Protein Name	Serine incorporator 1		
	Organism	Gene ID	UniProt ID
	Human	<a href="#">57515;</a>	<a href="#">Q9NRX5;</a>
	Mouse	<a href="#">56442;</a>	<a href="#">Q9QZI8;</a>
	Rat	<a href="#">294421;</a>	<a href="#">Q7TNK0;</a>
Cellular Localization	Endoplasmic reticulum membrane ; Multi-pass membrane protein .		
Tissue specificity	Adrenal gland,Brain,Epithelium,Liver,Testis,		
Function	Function:Enhances the incorporation of serine into phosphatidylserine and sphingolipids.,similarity:Belongs to the TDE1 family.,subunit:Interacts with SPTLC1.,		

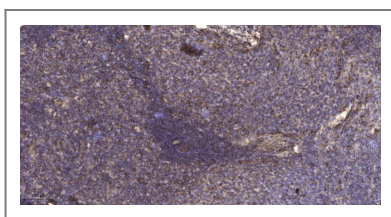
## Validation Data



Western Blot analysis of various cells using Serinc1 Polyclonal Antibody



Western blot analysis of lysates from HepG2 cells, using SERC1 Antibody. The lane on the right is blocked with the synthesized peptide.



Immunohistochemical analysis of paraffin-embedded human cervical carcinoma. 1, Antibody was diluted at 1:200(4° overnight). 2, Tris-EDTA,pH9.0 was used for antigen retrieval. 3,Secondary antibody was diluted at 1:200(room temperature, 45min).

## Contact information

Orders: [order@immunoway.com](mailto:order@immunoway.com)  
 Support: [tech@immunoway.com](mailto:tech@immunoway.com)  
 Telephone: 877-594-3616 (Toll Free), 408-747-0185  
 Website: <http://www.immunoway.com>  
 Address: 2200 Ringwood Ave San Jose, CA 95131 USA



Please scan the QR code to access additional product information:  
**Serinc1 Rabbit pAb**

For Research Use Only. Not for Use in Diagnostic Procedures.

[Antibody](#) | [ELISA Kits](#) | [Protein](#) | [Reagents](#)