

Septin 5 Rabbit pAb

CatalogNo: YT4249

Key Features

Host Species

- Rabbit

Reactivity

- Human, Mouse, Rat

Applications

- WB, IHC

MW

- 42kD (Observed)

Isotype

- IgG

Recommended Dilution Ratios

WB 1:500-2000**IHC 1:50-300**

Storage

Storage* -15°C to -25°C/1 year (Do not lower than -25°C)**Formulation** Liquid in PBS containing 50% glycerol, 0.5% BSA and 0.02% sodium azide.

Basic Information

Clonality Polyclonal

Immunogen Information

Immunogen Synthesized peptide derived from Septin 5 . at AA range: 180-260**Specificity** Septin 5 Polyclonal Antibody detects endogenous levels of Septin 5 protein.

Target Information

Gene name SEPT5

Protein Name Septin-5

Organism	Gene ID	UniProt ID
Human	5413 ;	Q99719 ;
Mouse	18951 ;	Q9Z2Q6 ;
Rat	116728 ;	Q9JJM9 ;

Cellular Localization

Cytoplasm . Cytoplasm, cytoskeleton . In platelets, found in areas surrounding alpha-granules.

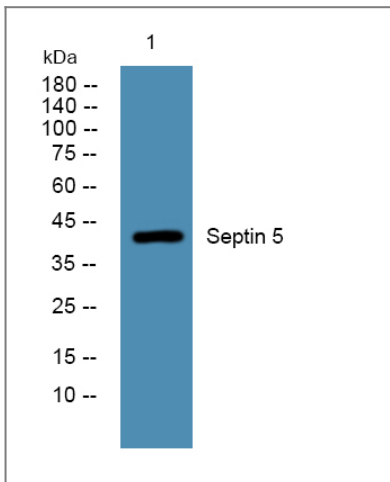
Tissue specificity

Expressed at high levels in the CNS, as well as in heart and platelets (at protein level).

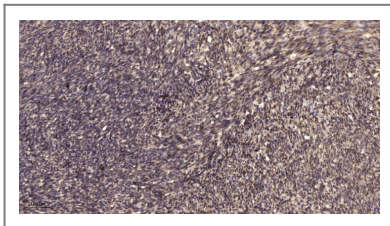
Function

Function:Involved in cytokinesis .,similarity:Belongs to the septin family.,subunit:May assemble into a multicomponent structure.,

Validation Data



Western blot analysis of lysates from DU145 cells, primary antibody was diluted at 1:1000, 4° over night



Immunohistochemical analysis of paraffin-embedded human uterus. 1, Antibody was diluted at 1:200(4° overnight). 2, Tris-EDTA,pH9.0 was used for antigen retrieval. 3,Secondary antibody was diluted at 1:200(room temperature, 45min).

Contact information

Orders: order@immunoway.com
Support: tech@immunoway.com
Telephone: 877-594-3616 (Toll Free), 408-747-0185
Website: http://www.immunoway.com
Address: 2200 Ringwood Ave San Jose, CA 95131 USA



Please scan the QR code
to access additional
product information:
Septin 5 Rabbit pAb

For Research Use Only. Not for Use in Diagnostic Procedures.

[Antibody](#) | [ELISA Kits](#) | [Protein](#) | [Reagents](#)