

## Septin 1 Rabbit pAb

CatalogNo: YT4245

### Key Features

**Host Species**

- Rabbit

**Reactivity**

- Human, Mouse, Rat

**Applications**

- WB, IHC, IF, ELISA

**MW**

- 41kD (Observed)

**Isotype**

- IgG

### Recommended Dilution Ratios

**WB 1:500-1:2000****IHC 1:100-1:300****ELISA 1:20000****IF 1:50-200**

### Storage

**Storage\***

-15°C to -25°C/1 year (Do not lower than -25°C)

**Formulation**

Liquid in PBS containing 50% glycerol, 0.5% BSA and 0.02% sodium azide.

### Basic Information

**Clonality**

Polyclonal

### Immunogen Information

**Immunogen**

The antiserum was produced against synthesized peptide derived from human SEPT1. AA range: 181-230

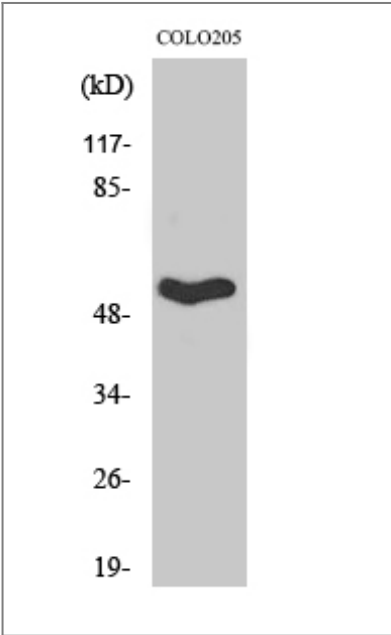
**Specificity**

Septin 1 Polyclonal Antibody detects endogenous levels of Septin 1 protein.

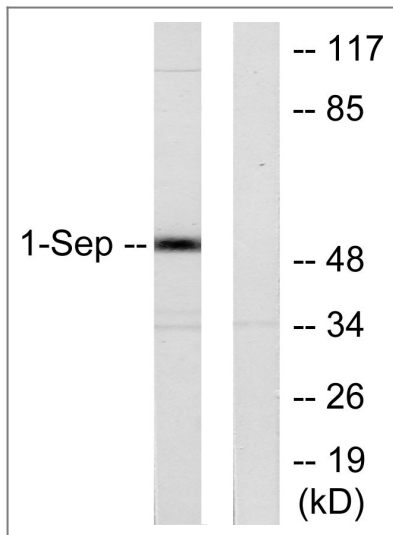
### Target Information

Gene name	SEPT1		
Protein Name	Septin-1		
	Organism	Gene ID	UniProt ID
	Human	<a href="#">1731</a> ;	<a href="#">Q8WYJ6</a> ;
	Mouse	<a href="#">54204</a> ;	<a href="#">P42209</a> ;
	Rat	<a href="#">293507</a> ;	<a href="#">Q5EB96</a> ;
Cellular Localization	Cytoplasm . Cytoplasm, cytoskeleton . Cytoplasm, cytoskeleton, microtubule organizing center, centrosome. Midbody. Remains at the centrosomes and the nearby microtubules throughout mitosis. Localizes to the midbody during cytokinesis.		
Tissue specificity	Expressed at high levels in lymphoid and hematopoietic tissues.		
Function	Function:Involved in cytokinesis .,similarity:Belongs to the septin family.,subunit:May assemble into a multicomponent structure.,		

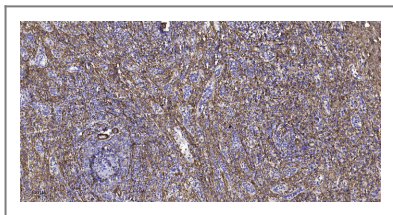
Validation Data



Western Blot analysis of various cells using Septin 1 Polyclonal Antibody



Western blot analysis of lysates from Jurkat cells, using SEPT1 Antibody. The lane on the right is blocked with the synthesized peptide.



Immunohistochemical analysis of paraffin-embedded human spleen tissue. 1, primary Antibody was diluted at 1:200 (4° overnight). 2, Sodium citrate pH 6.0 was used for antigen retrieval (>98°C, 20min). 3, Secondary antibody was diluted at 1:200

## Contact information

Orders: [order@immunoway.com](mailto:order@immunoway.com)  
 Support: [tech@immunoway.com](mailto:tech@immunoway.com)  
 Telephone: 877-594-3616 (Toll Free), 408-747-0185  
 Website: <http://www.immunoway.com>  
 Address: 2200 Ringwood Ave San Jose, CA 95131 USA



Please scan the QR code to access additional product information:  
**Septin 1 Rabbit pAb**

For Research Use Only. Not for Use in Diagnostic Procedures.

[Antibody](#) | [ELISA Kits](#) | [Protein](#) | [Reagents](#)