

## SENP8 Rabbit pAb

CatalogNo: YT4242

### | Key Features

#### Host Species

- Rabbit

#### Reactivity

- Human, Mouse, Rat

#### Applications

- WB, IHC, IF, ELISA

#### MW

- 27kD (Observed)

#### Isotype

- IgG

### | Recommended Dilution Ratios

**WB 1:500-1:2000**

**IHC 1:100-1:300**

**ELISA 1:10000**

**IF 1:50-200**

### | Storage

#### Storage\*

-15°C to -25°C/1 year (Do not lower than -25°C)

#### Formulation

Liquid in PBS containing 50% glycerol, 0.5% BSA and 0.02% sodium azide.

### | Basic Information

#### Clonality

Polyclonal

### | Immunogen Information

#### Immunogen

The antiserum was produced against synthesized peptide derived from human SENP8. AA range: 161-210

#### Specificity

SENP8 Polyclonal Antibody detects endogenous levels of SENP8 protein.

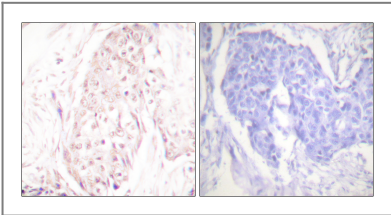
### | Target Information

Gene name	SEN8		
Protein Name	Sentrin-specific protease 8		
	Organism	Gene ID	UniProt ID
	Human	<a href="#">123228</a> ;	<a href="#">Q96LD8</a> ;
	Mouse	<a href="#">71599</a> ;	<a href="#">Q9D2Z4</a> ;
	Rat	<a href="#">315723</a> ;	<a href="#">Q5FVJ8</a> ;

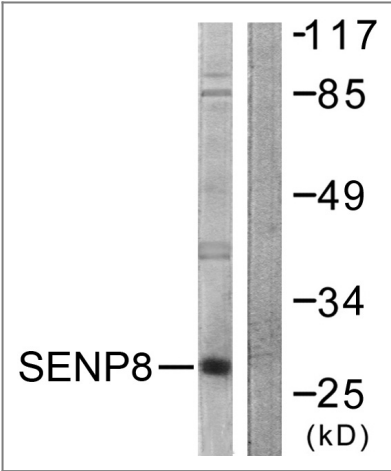
**Tissue specificity** Broadly expressed, with highest levels in kidney and pancreas.

**Function** Function:Protease that catalyzes two essential functions in the NEDD8 pathway: processing of full-length NEDD8 to its mature form and deconjugation of NEDD8 from targeted proteins such as cullins or p53.,similarity:Belongs to the peptidase C48 family.,tissue specificity:Broadly expressed, with highest levels in kidney and pancreas.,

Validation Data



Immunohistochemistry analysis of paraffin-embedded human breast carcinoma tissue, using SENP8 Antibody. The picture on the right is blocked with the synthesized peptide.



Western blot analysis of lysates from HUVEC cells, using SENP8 Antibody. The lane on the right is blocked with the synthesized peptide.

Contact information

Orders: order@immunoway.com  
Support: tech@immunoway.com  
Telephone: 877-594-3616 (Toll Free), 408-747-0185  
Website: <http://www.immunoway.com>  
Address: 2200 Ringwood Ave San Jose, CA 95131 USA



Please scan the QR code  
to access additional  
product information:  
**SENP8 Rabbit pAb**

---

For Research Use Only. Not for Use in Diagnostic Procedures.

[Antibody](#) | [ELISA Kits](#) | [Protein](#) | [Reagents](#)