

SCAF1 Rabbit pAb

CatalogNo: YT4217

Key Features

Host Species

- Rabbit

Reactivity

- Human, Mouse

Applications

- WB, IHC

MW

- 140kD (Observed)

Isotype

- IgG

Storage

Storage* -15°C to -25°C/1 year (Do not lower than -25°C)

Formulation Liquid in PBS containing 50% glycerol, 0.5% BSA and 0.02% sodium azide.

Recommended Dilution Ratios

WB 1:500-2000

IHC 1:50-300

Basic Information

Clonality Polyclonal

Immunogen Information

Immunogen The antiserum was produced against synthesized peptide derived from human SFRS19. AA range:41-90

Specificity SCAF1 Polyclonal Antibody detects endogenous levels of SCAF1 protein.

Target Information

Gene name SCAF1

Protein Name Splicing factor arginine/serine-rich 19

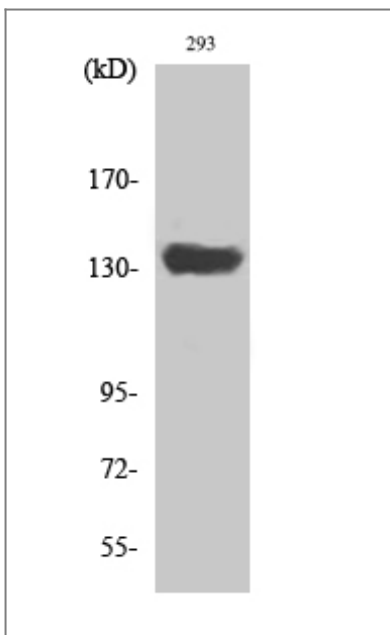
Organism	Gene ID	UniProt ID
Human	58506;	Q9H7N4;
Mouse	233208;	Q5U4C3;

Cellular Localization Nucleus .

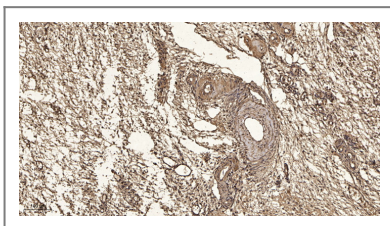
Tissue specificity Ubiquitous. Highly expressed in fetal brain and liver, poorly expressed in salivary gland, heart, skin and ovary. Expressed in colorectal carcinomas and ovarian cancers. Overexpressed in colorectal carcinomas as compared to normal colonic mucosa.

Function Function:May function in pre-mRNA splicing.,induction:Up-regulated by estrogens, androgens and glucocorticoids.,similarity:Belongs to the splicing factor SR family.,subunit:Interacts with POLR2A.,tissue specificity:Ubiquitous. Highly expressed in fetal brain and liver, poorly expressed in salivary gland, heart, skin and ovary. Expressed in colorectal carcinomas and ovarian cancers. Overexpressed in colorectal carcinomas as compared to normal colonic mucosa.,

Validation Data



Western Blot analysis of various cells using SCAF1 Polyclonal Antibody diluted at 1:2000 cells nucleus extracted by Minute TM Cytoplasmic and Nuclear Fractionation kit (SC-003, Invent biotech, MN, USA).



Immunohistochemical analysis of paraffin-embedded human oophoroma. 1, Antibody was diluted at 1:200(4° overnight). 2, Tris-EDTA, pH9.0 was used for antigen retrieval. 3, Secondary antibody was diluted at 1:200(room temperature, 45min).

| Contact information

Orders: order@immunoway.com
Support: tech@immunoway.com
Telephone: 877-594-3616 (Toll Free), 408-747-0185
Website: <http://www.immunoway.com>
Address: 2200 Ringwood Ave San Jose, CA 95131 USA



Please scan the QR code
to access additional
product information:
SCAF1 Rabbit pAb

For Research Use Only. Not for Use in Diagnostic Procedures.

[Antibody](#) | [ELISA Kits](#) | [Protein](#) | [Reagents](#)