

## RRP22 Rabbit pAb

CatalogNo: YT4177

### Key Features

#### Host Species

- Rabbit

#### Reactivity

- Human, Mouse

#### Applications

- WB, ELISA

#### MW

- 30kD (Observed)

#### Isotype

- IgG

### Recommended Dilution Ratios

**WB 1:500-1:2000**

**ELISA 1:40000**

**Not yet tested in other applications.**

### Storage

#### Storage\*

-15°C to -25°C/1 year (Do not lower than -25°C)

#### Formulation

Liquid in PBS containing 50% glycerol, 0.5% BSA and 0.02% sodium azide.

### Basic Information

#### Clonality

Polyclonal

### Immunogen Information

#### Immunogen

The antiserum was produced against synthesized peptide derived from human RASL10A. AA range: 107-156

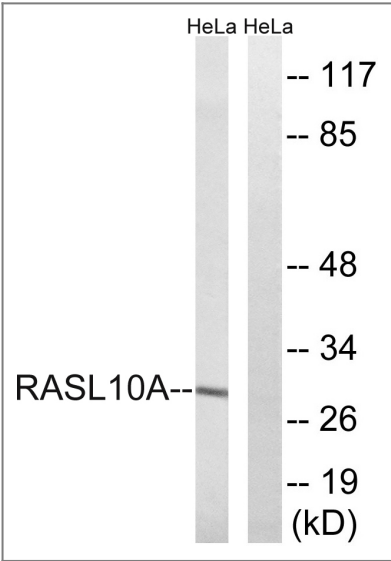
#### Specificity

RRP22 Polyclonal Antibody detects endogenous levels of RRP22 protein.

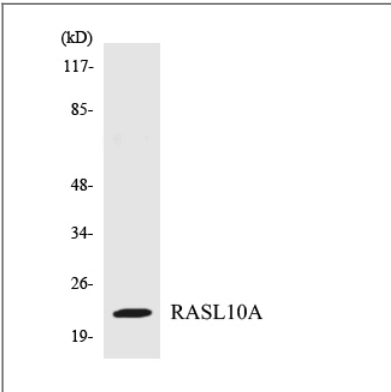
### Target Information

<b>Gene name</b>	RASL10A		
<b>Protein Name</b>	Ras-like protein family member 10A		
	<b>Organism</b>	<b>Gene ID</b>	<b>UniProt ID</b>
	Human	<a href="#">10633;</a>	<a href="#">Q92737;</a>
	Mouse	<a href="#">75668;</a>	<a href="#">Q8K5A4;</a>
<b>Cellular Localization</b>	Cell membrane ; Lipid-anchor ; Cytoplasmic side . Nucleus, nucleolus . May cycle in and out of the nucleolus in a GTP-dependent manner.		
<b>Tissue specificity</b>	Expression appears to be strictly limited to the central nervous system.		
<b>Function</b>	similarity:Belongs to the small GTPase superfamily. Ras family.,		

| Validation Data



Western blot analysis of lysates from HeLa cells, using RASL10A Antibody. The lane on the right is blocked with the synthesized peptide.



Western blot analysis of the lysates from 293 cells using RASL10A antibody.

| Contact information

Orders: order@immunoway.com  
Support: tech@immunoway.com  
Telephone: 877-594-3616 (Toll Free), 408-747-0185  
Website: http://www.immunoway.com  
Address: 2200 Ringwood Ave San Jose, CA 95131 USA



Please scan the QR code  
to access additional  
product information:  
**RRP22 Rabbit pAb**

---

For Research Use Only. Not for Use in Diagnostic Procedures.

[Antibody](#) | [ELISA Kits](#) | [Protein](#) | [Reagents](#)