

## RPA135 Rabbit pAb

CatalogNo: YT4169

### | Key Features

#### Host Species

- Rabbit

#### Reactivity

- Human, Mouse, Rat

#### Applications

- WB, IHC, IF, ELISA

#### MW

- 125kD (Observed)

#### Isotype

- IgG

### | Recommended Dilution Ratios

**WB 1:500-1:2000**

**IHC 1:100-1:300**

**ELISA 1:40000**

**IF 1:50-200**

### | Storage

#### Storage\*

-15°C to -25°C/1 year (Do not lower than -25°C)

#### Formulation

Liquid in PBS containing 50% glycerol, 0.5% BSA and 0.02% sodium azide.

### | Basic Information

#### Clonality

Polyclonal

### | Immunogen Information

#### Immunogen

Synthesized peptide derived from the Internal region of human RPA135.

#### Specificity

RPA135 Polyclonal Antibody detects endogenous levels of RPA135 protein.

### | Target Information

**Gene name** POLR1B

**Protein Name** DNA-directed RNA polymerase I subunit RPA2

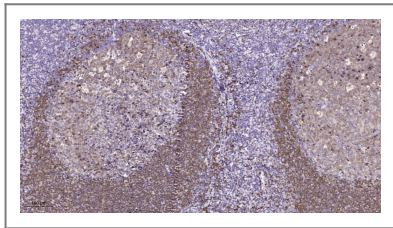
Organism	Gene ID	UniProt ID
Human	<a href="#">84172;</a>	<a href="#">Q9H9Y6;</a>
Mouse	<a href="#">20017;</a>	<a href="#">P70700;</a>
Rat	<a href="#">83582;</a>	<a href="#">O54888;</a>

**Cellular Localization** Nucleus, nucleolus . Chromosome .

**Tissue specificity** Eye,Pancreas,Skin,Testis,

**Function** Catalytic activity:Nucleoside triphosphate + RNA(n) = diphosphate + RNA(n+1).,Function:DNA-dependent RNA polymerase catalyzes the transcription of DNA into RNA using the four ribonucleoside triphosphates as substrates. Second largest core component of RNA polymerase I which synthesizes ribosomal RNA precursors. Proposed to contribute to the polymerase catalytic activity and forms the polymerase active center together with the largest subunit. Pol I is composed of mobile elements and RPA2 is part of the core element with the central large cleft and probably a clamp element that moves to open and close the cleft.,similarity:Belongs to the RNA polymerase beta chain family.,subunit:Component of the RNA polymerase I (Pol I) complex consisting of at least 13 subunits.,

## Validation Data



Immunohistochemical analysis of paraffin-embedded human tonsil. 1, Tris-EDTA,pH9.0 was used for antigen retrieval. 2 Antibody was diluted at 1:200(4° overnight.3,Secondary antibody was diluted at 1:200(room temperature, 45min).

## Contact information

Orders: [order@immunoway.com](mailto:order@immunoway.com)  
Support: [tech@immunoway.com](mailto:tech@immunoway.com)  
Telephone: 877-594-3616 (Toll Free), 408-747-0185  
Website: <http://www.immunoway.com>  
Address: 2200 Ringwood Ave San Jose, CA 95131 USA



Please scan the QR code to access additional product information:  
**RPA135 Rabbit pAb**

