

## RIOK1 Rabbit pAb

CatalogNo: YT4146

Orthogonal Validated 

### Key Features

**Host Species**

- Rabbit

**Reactivity**

- Human, Mouse, Rat

**Applications**

- IHC, IF, ELISA

**MW**

- 66kD (Calculated)

**Isotype**

- IgG

### Recommended Dilution Ratios

**IHC 1:100-1:300****ELISA 1:40000****IF 1:50-200**

### Storage

**Storage\***

-15°C to -25°C/1 year (Do not lower than -25°C)

**Formulation**

Liquid in PBS containing 50% glycerol, 0.5% BSA and 0.02% sodium azide.

### Basic Information

**Clonality**

Polyclonal

### Immunogen Information

**Immunogen**

Synthesized peptide derived from the Internal region of human RIOK1.

**Specificity**

RIOK1 Polyclonal Antibody detects endogenous levels of RIOK1 protein.

### Target Information

**Gene name**

RIOK1

**Protein Name** Serine/threonine-protein kinase RIO1

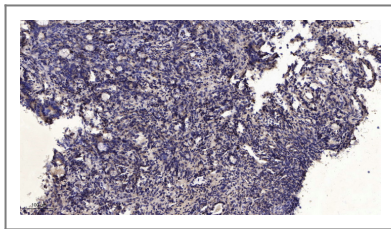
Organism	Gene ID	UniProt ID
Human	<a href="#">83732;</a>	<a href="#">Q9BRS2;</a>
Mouse	<a href="#">71340;</a>	<a href="#">Q922Q2;</a>

**Cellular Localization** Cytoplasm, cytosol .

**Tissue specificity** Adrenal gland,Brain,Cervix carcinoma,Colon adenocarcinoma,Lung,Lung carcinoma,

**Function** Catalytic activity:ATP + a protein = ADP + a phosphoprotein.,similarity:Belongs to the protein kinase superfamily. RIO-type Ser/Thr kinase family.,similarity:Contains 1 protein kinase domain.,

## | Validation Data



Immunohistochemical analysis of paraffin-embedded human Gastric adenocarcinoma. 1, Antibody was diluted at 1:200(4° overnight). 2, Tris-EDTA,pH9.0 was used for antigen retrieval. 3,Secondary antibody was diluted at 1:200(room temperature, 45min).

## | Contact information

Orders: [order@immunoway.com](mailto:order@immunoway.com)  
Support: [tech@immunoway.com](mailto:tech@immunoway.com)  
Telephone: 877-594-3616 (Toll Free), 408-747-0185  
Website: <http://www.immunoway.com>  
Address: 2200 Ringwood Ave San Jose, CA 95131 USA



Please scan the QR code to access additional product information:  
**RIOK1 Rabbit pAb**

For Research Use Only. Not for Use in Diagnostic Procedures.

[Antibody](#) | [ELISA Kits](#) | [Protein](#) | [Reagents](#)